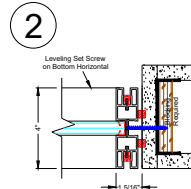
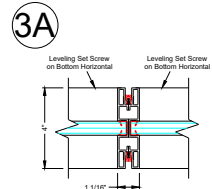


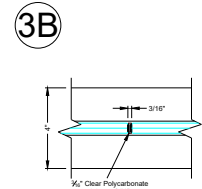
1 Recessed Wall Start



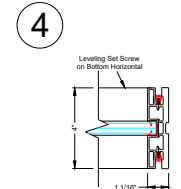
2 Flush Wall Start



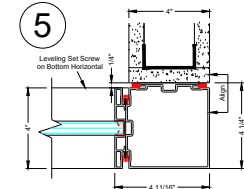
3A Panel Connection



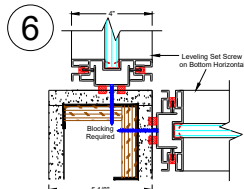
3B Butt Glazed Glass Connection



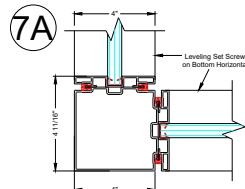
4 Finished End



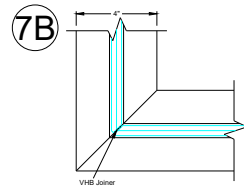
5 Finished End at Drywall Bypass



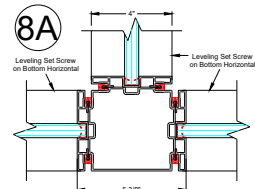
6 2-Way Connection at Drywall Corner



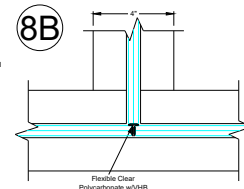
7A 2-Way Post



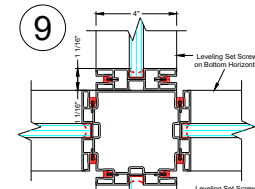
7B Butt Glazed Corner Connection



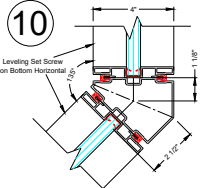
8A 3-Way Post



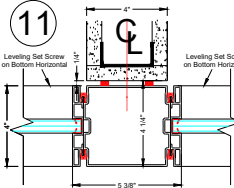
8B Butt Glazed 3-Way Connection



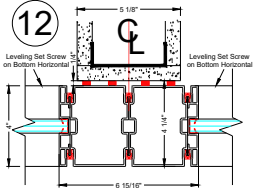
9 4-Way Connection



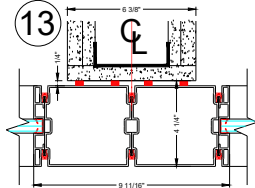
10 135 Degree Post



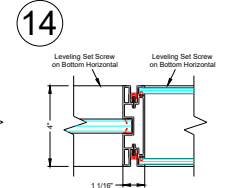
11 5" In-Line Post at 4" Drywall Bypass



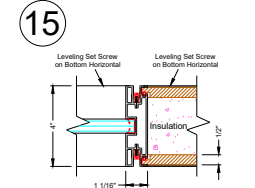
12 (2) 4" In-Line Posts at 5 1/8" Drywall Bypass



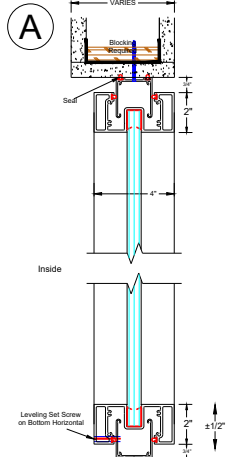
13 (2) 5" In-Line Posts at 6 3/8" Drywall Bypass



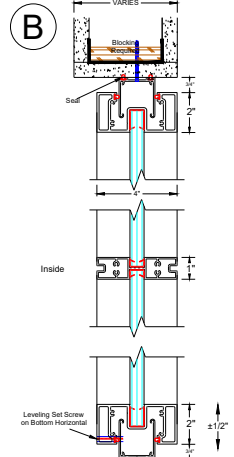
14 Single to Double Glazed Panel Connection



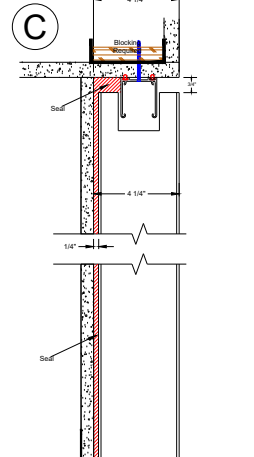
15 Single Glazed to Double Solid Panel Connection



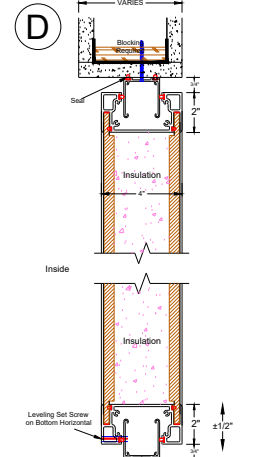
A Single Glazed Panel



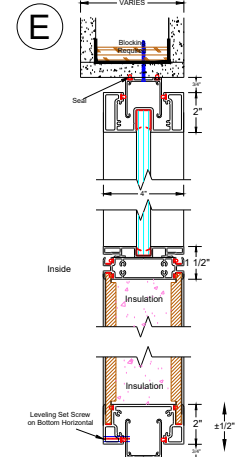
B Single Glazed Panel with Transom



C Post Condition @ Drywall Return



D Double Solid Panel



E Double Solid Panel with Glass Transom

Note : System shown flush to corridor side of soffit and sheetrock wall. System can also be setback or centered if so desired. Blocking required either way.



| | | |
|-----|------|----------------|
| NO. | DATE | ISSUE/REVISION |
| | | |
| | | |
| | | |
| | | |

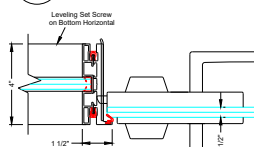
0

Refine Single-Glazed Standard Panel Details

Job Specific Details to Supersede Typical Standard Details

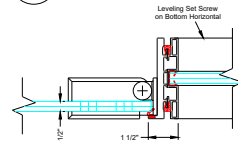
| | |
|----------------|---------------|
| DATE | November 2023 |
| SCALE | 1" = 1'-0" |
| PROJECT NO. | |
| PROJECT LEADER | |
| JOB DRAWER | |
| CHECKED BY | |
| CAD FILE NAME | |
| ISSUE NO. | 1 |
| SHEET NO. | |

16



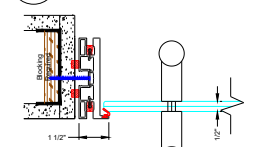
Panel to DF Keeper Glass Hinged Door

17



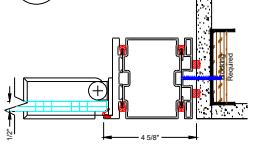
Panel to DF Hinge Glass Hinged Door

18



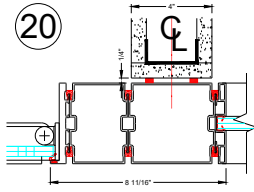
DF Keeper at Flush Start Glass Hinged Door

19



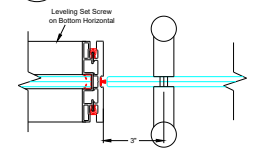
DF Hinge at Flush Start Glass Hinged Door

20



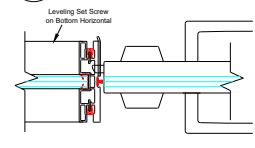
DF Hinge at 4" Bypass Glass Hinged Door

21A



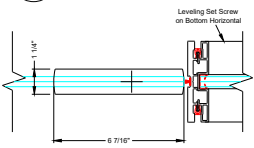
Panel to DF Keeper Glass Pivot Door

21B



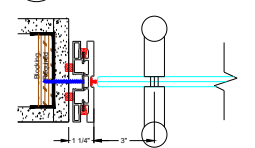
Panel to DF Keeper Glass Pivot Door

22



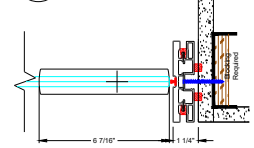
Panel to DF Pivot Glass Pivot Door

23



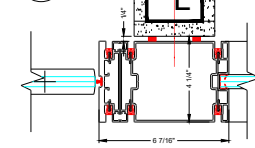
DF Keeper at Flush Start Glass Pivot Door

24



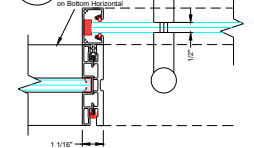
DF Pivot at Flush Start Glass Pivot Door

25



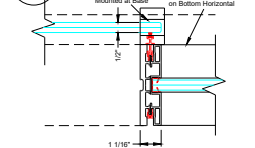
DF Pivot at 4" Bypass Glass Pivot Door

26



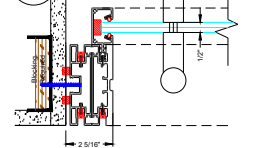
Panel to DF Receiver Glass Sliding Door

27



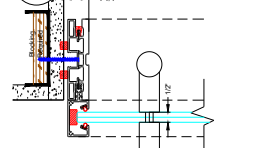
Panel to DF Seal Glass Sliding Door

28



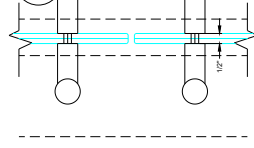
Receiver at Flush Start Glass Sliding Door

29



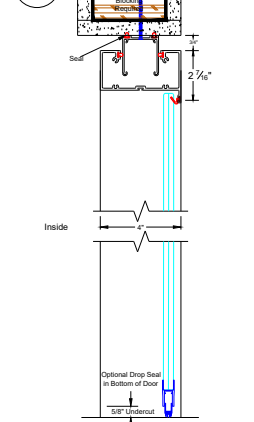
Receiver at Flush Start Glass Sliding Door

30



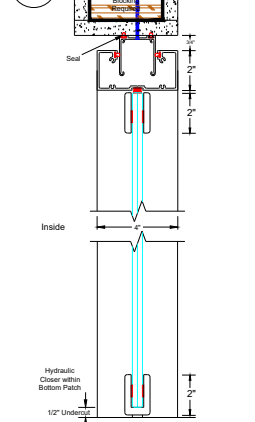
Double Door Pulls Glass Sliding Door

F



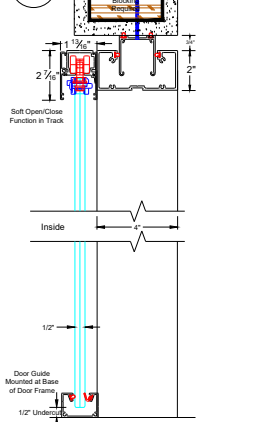
Glass Hinged Door

G



Glass Pivot Door

H



Glass Sliding Door

Table with 2 columns: NO., DATE. Row 1: 0, .

NO. DATE ISSUE/REVISION

0

ISSUED FILE

DATE: November 2023

SCALE: 1/4" = 1'-0"

DESIGN: MERRILL

PROJECT NO.

PROJECT LEADER

DESIGNER

CHECKED BY

DATE FILED

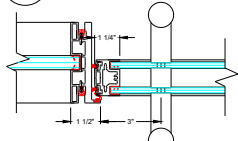
ISSUED FILE

NO. DATE

2

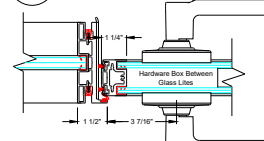
NO. DATE

31A



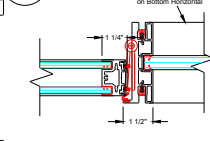
Panel to DF Keeper
Double Glazed Hinge Dr

31B



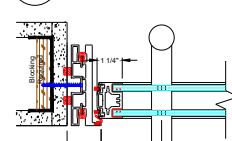
Panel to DF Keeper
Double Glazed Hinge Dr

32



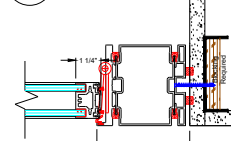
Panel to DF Hinge
Double Glazed Hinge Dr

33



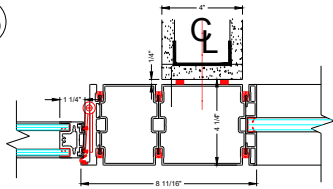
DF Keeper at Flush Start
Double Glazed Hinge Dr

34



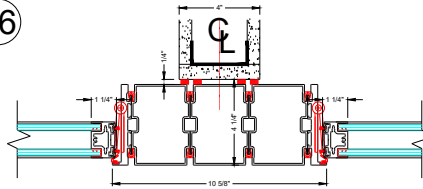
DF Pivot at Flush Start
Double Glazed Hinge Dr

35



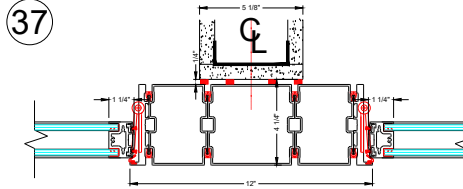
DF Pivot at 4" Bypass
Double Glazed Hinge Dr

36



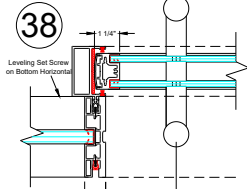
In-Line Posts at 4" Drywall Bypass
Back to Back Double Glazed Hinge Drs

37



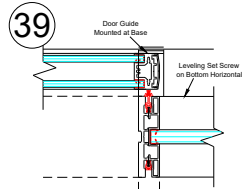
In-Line Posts at 5 1/8" Drywall Bypass
Back to Back Double Glazed Hinge Drs

38



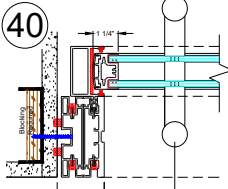
Panel to DF Receiver
Double Glazed Slider

39



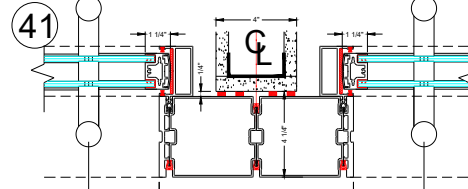
Panel to DF Seal
Double Glazed Slider

40



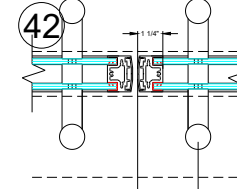
Receiver at Flush Start
Double Glazed Slider

41



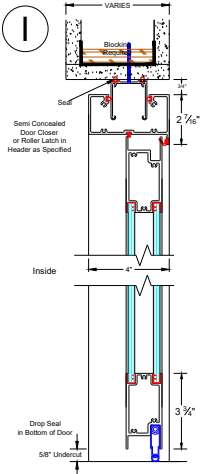
(2) 5" In-Line Posts at 4" Drywall Bypass
Back to Back Double Glazed Sliders

42



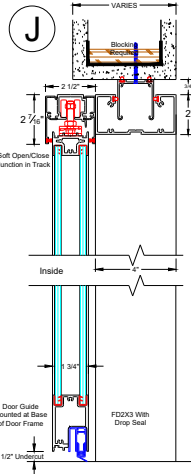
Double Door Pulls
Double Glazed Slider

I

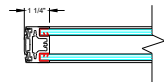


Double Glazed Hinge Dr

J

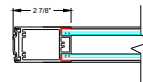


Double Glazed Slider



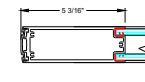
- Door Stile for use with Swing or Sliding Doors
- Can be Used as Top and Bottom Rails on Sliding Doors
- Pulls can be Utilized Through Glass
- 1" Stile on Swing Doors with Pulls, Requires Semi-Concealed Closer in 3/4" Top Rail
- Lever Sets can be Utilized with a Hardware Box on Swing Doors
- Can be Used as Top and Bottom Rails without Closers or Drop Seals

1" Door Stile or Rail



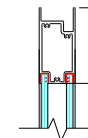
- Door Stile for use with Swing or Sliding Doors
- Pulls can be Utilized Through Glass
- Lever Sets in Aluminum on Swing Doors
- Can be Used as Top and Bottom Rails without Closers or Drop Seals

3" Door Stile or Rail



- Door Stile for use with Swing or Sliding Doors
- Pulls can be Utilized Through Aluminum
- Lever Sets in Aluminum on Swing Doors
- Can be Used as Top and Bottom Rails without Closers or Drop Seals

5" Door Stile or Rail



- Top or Bottom Rail for Swing and Sliding Doors
- Required on Swing Doors with Closers and/or Drop Seals
- Closers Required on Swing Doors with 1" Stiles and Door Pull

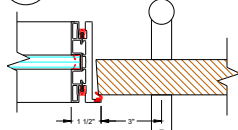
3 3/4" Door Rail

Table with columns for NO., DATE, ISSUE/REVISION.

0

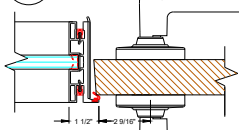
3

55A



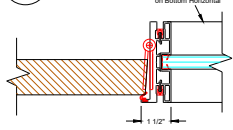
Panel to DF Keeper
Wood Hinge Dr

55B



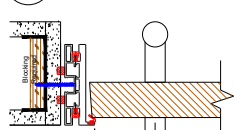
Panel to DF Keeper
Wood Hinge Dr

56



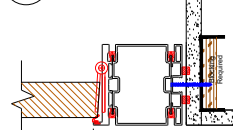
Panel to DF Hinge
Wood Hinge Dr

57



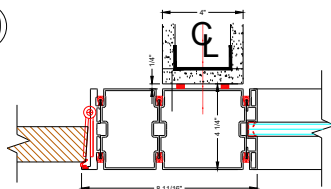
DF Keeper at Flush Start
Wood Hinge Dr

58



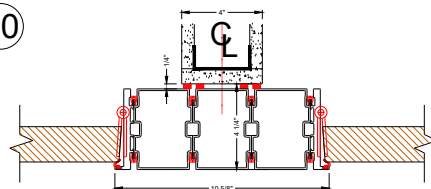
DF Pivot at Flush Start
Wood Hinge Dr

59



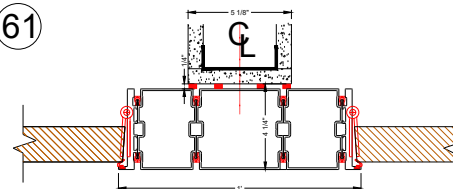
DF Pivot at 4" Bypass
Wood Hinge Dr

60



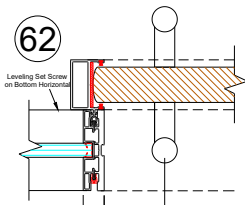
In-Line Posts at 4" Drywall Bypass
Back to Back Wood Hinge Drs

61



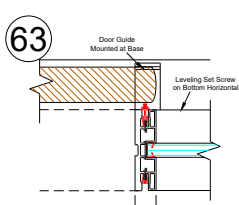
In-Line Posts at 5 1/8" Drywall Bypass
Back to Back Wood Hinge Drs

62



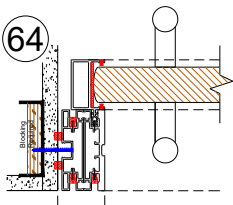
Panel to DF Receiver
Wood Slider

63



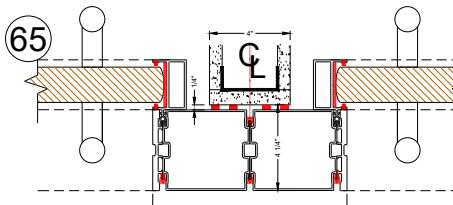
Panel to DF Seal
Wood Slider

64



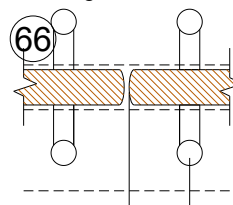
Receiver at Flush Start
Wood Slider

65



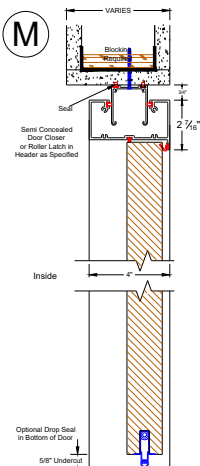
(2) 5" In-Line Posts at 4" Drywall Bypass
Back to Back Wood Sliders

66



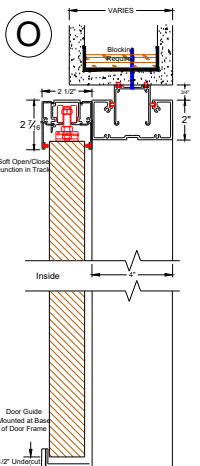
Double Door Pulls
Wood Slider

M



Wood Hinged Door

O



Wood Sliding Door

| NO. | DATE | ISSUE/REVISION |
|-----|------|----------------|
| 0 | | |

0

