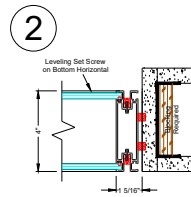
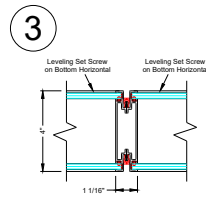


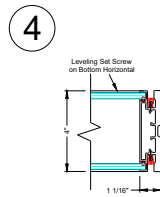
1 Recessed Wall Start



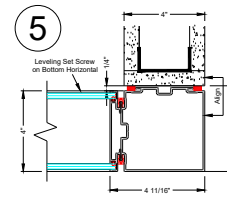
2 Flush Wall Start



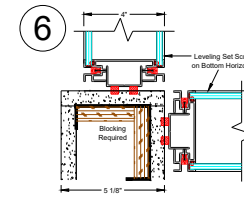
3 Panel Connection



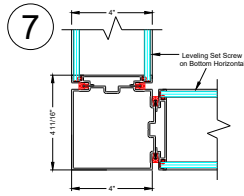
4 Finished End



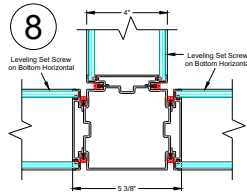
5 Finished End at Drywall Bypass



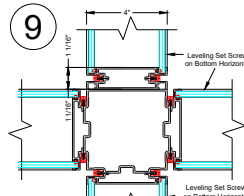
6 2-Way Connection at Drywall Corner



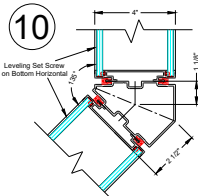
7 2-Way Post



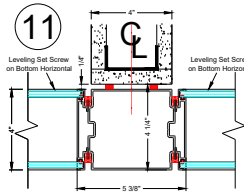
8 3-Way Post



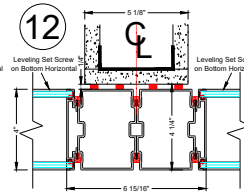
9 4-Way Connection



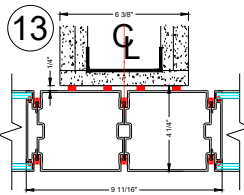
10 135 Degree Post



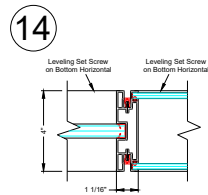
11 5" In-Line Post at 4" Drywall Bypass



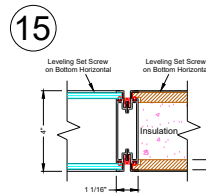
12 (2) 4" In-Line Posts at 5 1/8" Drywall Bypass



13 (2) 5" In-Line Posts at 6 3/8" Drywall Bypass

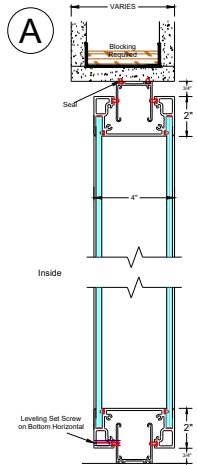


14 Single to Double Glazed Panel Connection

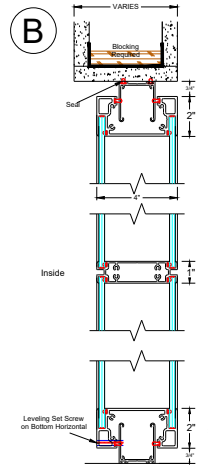


15 Double Glazed to Double Solid Panel Connection

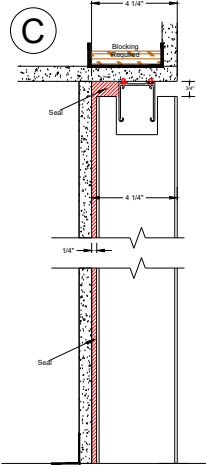
**Note :** System shown flush to corridor side of soffit and sheetrock wall. System can also be setback or centered if so desired. Blocking required either way.



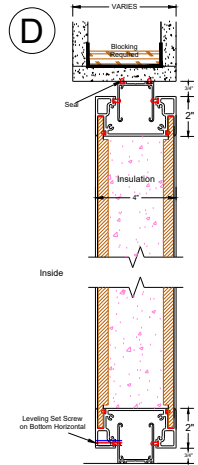
A Double Glazed Panel



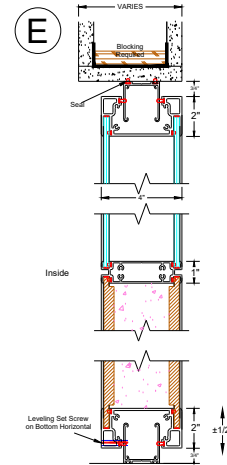
B Double Glazed Panel with Transom



C Post Condition @ Drywall Return



D Double Solid Panel

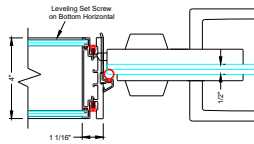


E Double Solid Panel with Glass Transom

NO.	DATE	ISSUE/REVISION
0		

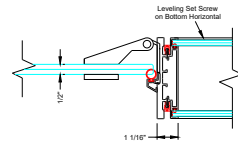
0

16



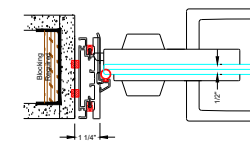
Panel to DF Keeper  
Glass Hinged Door

17



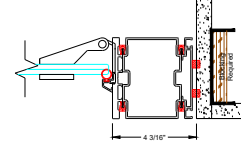
Panel to DF Hinge  
Glass Hinged Door

18



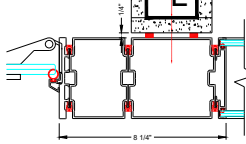
DF Keeper at Flush Start  
Glass Hinged Door

19



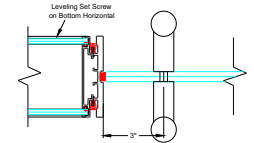
DF Hinge at Flush Start  
Glass Hinged Door

20



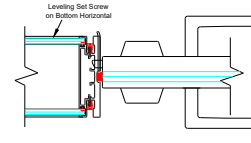
DF Hinge at 4" Bypass  
Glass Hinged Door

21A



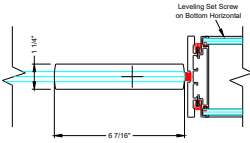
Panel to DF Keeper  
Glass Pivot Door

21B



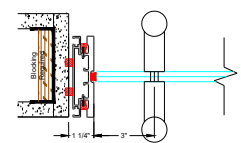
Panel to DF Keeper  
Glass Pivot Door

22



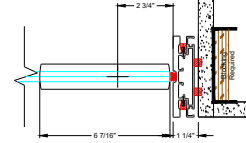
Panel to DF Pivot  
Glass Pivot Door

23



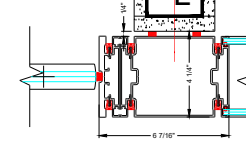
DF Keeper at Flush Start  
Glass Pivot Door

24



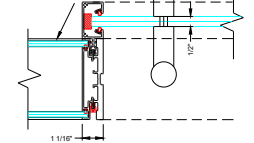
DF Pivot at Flush Start  
Glass Pivot Door

25



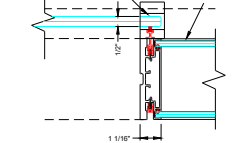
DF Pivot at 4" Bypass  
Glass Pivot Door

26



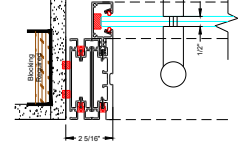
Panel to DF Receiver  
Glass Sliding Door

27



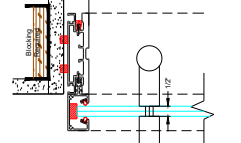
Panel to DF Seal  
Glass Sliding Door

28



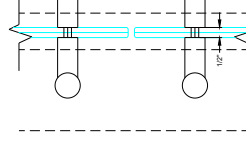
Receiver at Flush Start  
Glass Sliding Door

29



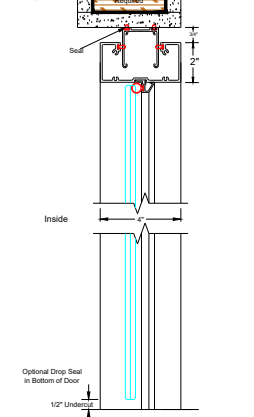
Receiver at Flush Start  
Glass Sliding Door

30



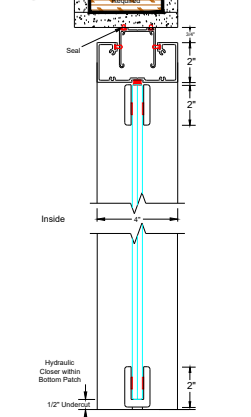
Double Door Pulls  
Glass Sliding Door

F



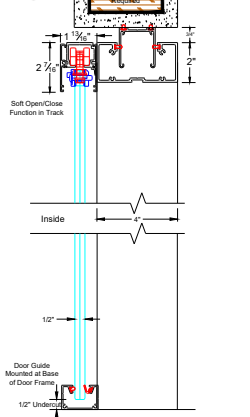
Glass Hinged Door

G



Glass Pivot Door

H

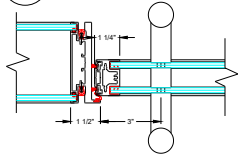


Glass Sliding Door

Revision table with columns for NO., DATE, ISSUE/REVISION, and a grid for tracking changes.

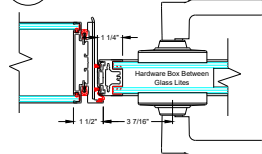
0

31A



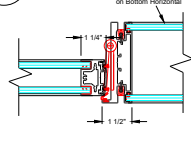
Panel to DF Keeper  
Double Glazed Hinge Dr

31B



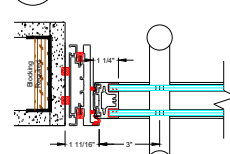
Panel to DF Keeper  
Double Glazed Hinge Dr

32



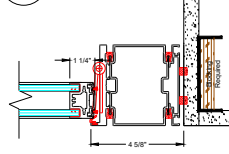
Panel to DF Hinge  
Double Glazed Hinge Dr

33



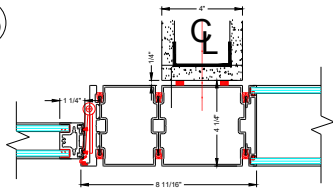
DF Keeper at Flush Start  
Double Glazed Hinge Dr

34



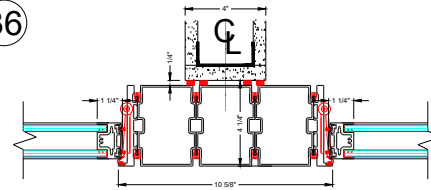
DF Pivot at Flush Start  
Double Glazed Hinge Dr

35



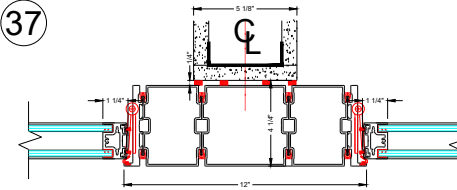
DF Pivot at 4" Bypass  
Double Glazed Hinge Dr

36



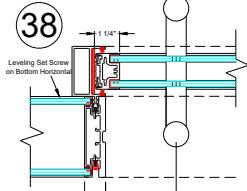
In-Line Posts at 4" Drywall Bypass  
Back to Back Double Glazed Hinge Drs

37



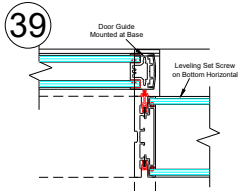
In-Line Posts at 5 1/8" Drywall Bypass  
Back to Back Double Glazed Hinge Drs

38



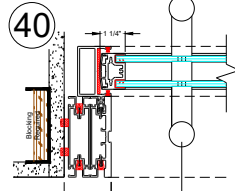
Panel to DF Receiver  
Double Glazed Slider

39



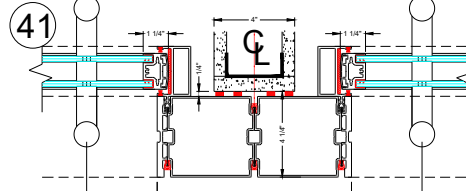
Panel to DF Seal  
Double Glazed Slider

40



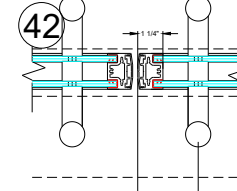
Receiver at Flush Start  
Double Glazed Slider

41



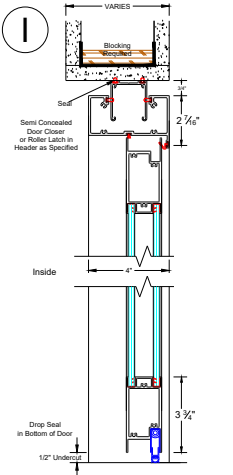
(2) 5" In-Line Posts at 4" Drywall Bypass  
Back to Back Double Glazed Sliders

42



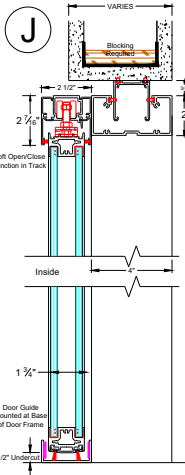
Double Door Pulls  
Double Glazed Slider

I

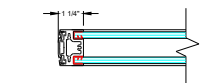


Double Glazed Hinge Dr

J

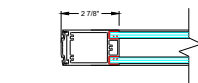


Double Glazed Slider



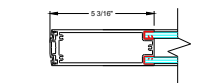
- Door Stile for use with Swing or Sliding Doors
- Can be Used as Top and Bottom Rails on Sliding Doors
- Pulls can be Utilized Through Glass
- 1" Stile on Swing Doors with Pulls. Requires Semi-Concealed Closer in 3-3/4" Top Rail
- Lever Sets can be Utilized with a Hardware Box on Swing Doors
- Can be Used as Top and Bottom Rails without Closers or Drop Seals

1" Door Stile or Rail



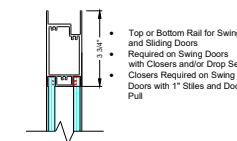
- Door Stile for use with Swing or Sliding Doors
- Pulls can be Utilized Through Glass
- Lever Sets in Aluminum on Swing Doors
- Can be Used as Top and Bottom Rails without Closers or Drop Seals

3" Door Stile or Rail



- Door Stile for use with Swing or Sliding Doors
- Pulls can be Utilized Through Aluminum
- Lever Sets in Aluminum on Swing Doors
- Can be Used as Top and Bottom Rails without Closers or Drop Seals

5" Door Stile or Rail



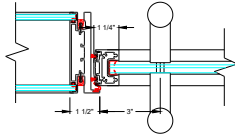
- Top or Bottom Rail for Swing and Sliding Doors
- Required on Swing Doors with Closers and/or Drop Seals
- Closers Required on Swing Doors with 1" Stiles and Door Pull

3 3/4" Door Rail

NO.	DATE	ISSUE/REVISION
0		

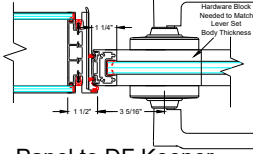
0

43A



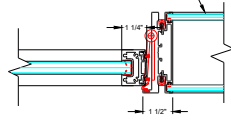
Panel to DF Keeper  
Single Glazed Hinge Dr

43B



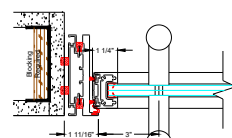
Panel to DF Keeper  
Single Glazed Hinge Dr

44



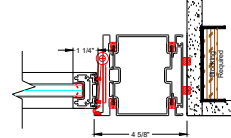
Panel to DF Hinge  
Single Glazed Hinge Dr

45



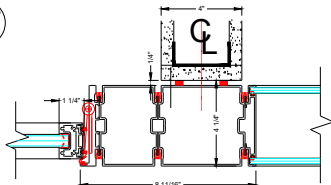
DF Keeper at Flush Start  
Single Glazed Hinge Dr

46



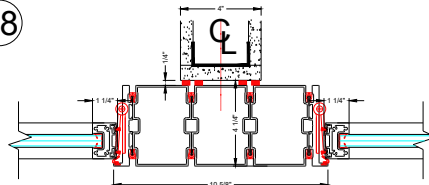
DF Pivot at Flush Start  
Single Glazed Hinge Dr

47



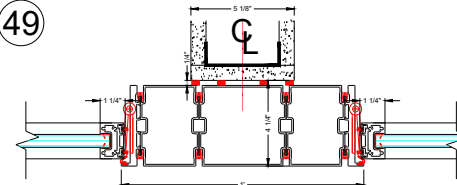
DF Pivot at 4" Bypass  
Single Glazed Hinge Dr

48



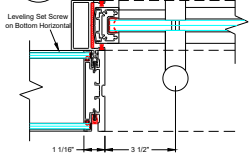
In-Line Posts at 4" Drywall Bypass  
Back to Back Single Glazed Hinge Drs

49



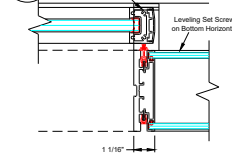
In-Line Posts at 5 1/8" Drywall Bypass  
Back to Back Single Glazed Hinge Drs

50



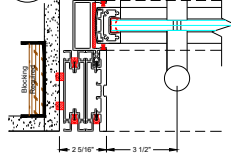
Panel to DF Receiver  
Single Glazed Slider

51



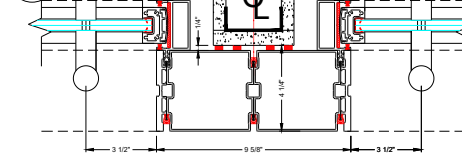
Panel to DF Seal  
Single Glazed Slider

52



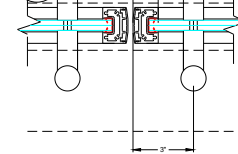
Receiver at Flush Start  
Single Glazed Slider

53



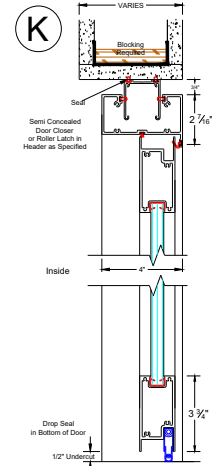
(2) 5" In-Line Posts at 4" Drywall Bypass  
Back to Back Single Glazed Sliders

54



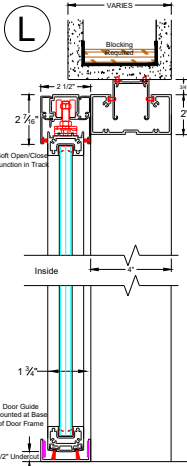
Double Door Pulls Single  
Glazed Slider

K



Single Glazed Hinge Dr

L



Single Glazed Slider

1" Door Stile or Rail

- Door Stile for use with Swing or Sliding Doors
- Can be Used as Top and Bottom Rails on Sliding Doors
- Pulls can be Utilized Through Glass
- 1" Stile on Swing Doors with Pulls, Requires Semi-Concealed Closer in 3/4" Top Rail
- Lever Sets can be Utilized with a Hardware Box on Swing Doors
- Can be Used as Top and Bottom Rails without Closers or Drop Seals

3" Door Stile or Rail

- Door Stile for use with Swing or Sliding Doors
- Pulls can be Utilized Through Glass
- Lever Sets in Aluminum on Swing Doors
- Can be Used as Top and Bottom Rails without Closers or Drop Seals

5" Door Stile or Rail

- Door Stile for use with Swing or Sliding Doors
- Pulls can be Utilized Through Aluminum
- Lever Sets in Aluminum on Swing Doors
- Can be Used as Top and Bottom Rails with Closers or Drop Seals

3 3/4" Door Rail

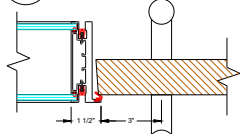
- Top or Bottom Rail for Swing and Sliding Doors
- Required on Swing Doors with Closers and/or Drop Seals
- Closers Required on Swing Doors with 1" Stiles and Door Pull

Glass shown as 1/2", can also utilize 3/8" tempered glass within doors.

NO.	DATE	ISSUE/REVISION

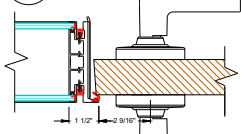
0

55A



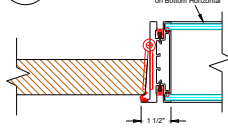
Panel to DF Keeper  
Wood Hinge Dr

55B



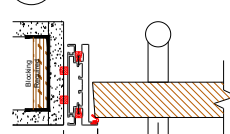
Panel to DF Keeper  
Wood Hinge Dr

56



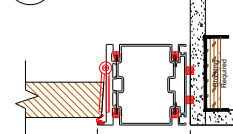
Panel to DF Hinge  
Wood Hinge Dr

57



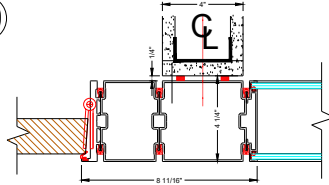
DF Keeper at Flush Start  
Wood Hinge Dr

58



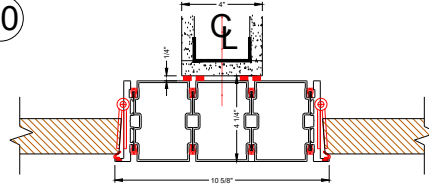
DF Pivot at Flush Start  
Wood Hinge Dr

59



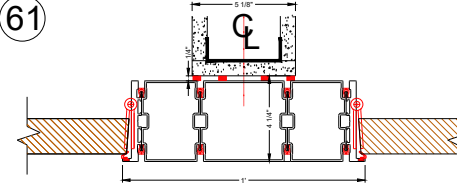
DF Pivot at 4" Bypass  
Wood Hinge Dr

60



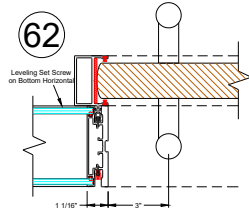
In-Line Posts at 4" Drywall Bypass  
Back to Back Wood Hinge Drs

61



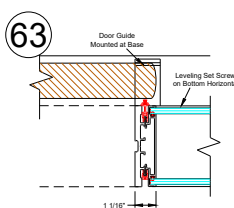
In-Line Posts at 5 1/8" Drywall Bypass  
Back to Back Wood Hinge Drs

62



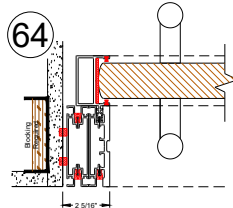
Panel to DF Receiver  
Wood Slider

63



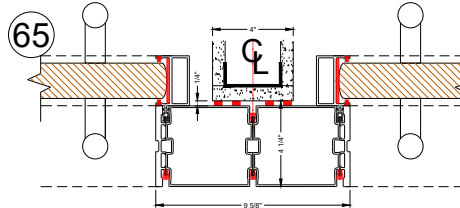
Panel to DF Seal  
Wood Slider

64



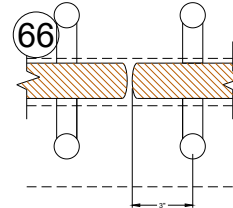
Receiver at Flush Start  
Wood Slider

65



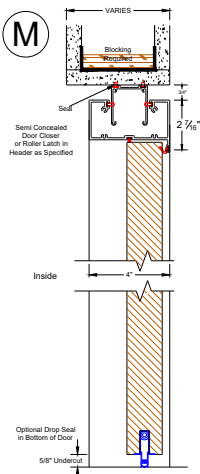
(2) 5" In-Line Posts at 4" Drywall Bypass  
Back to Back Wood Sliders

66



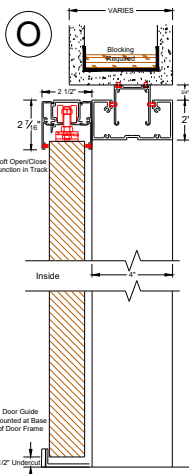
Double Door Pulls  
Wood Slider

M



Wood Hinged Door

O



Wood Sliding Door

Table with columns: NO., DATE, ISSUE/REVISION. Row 1: 0

0

