

This document is the property of InFinium LLC. It is intended for the use of the customer and is not to be distributed, copied, or reproduced without the written consent of InFinium LLC. InFinium LLC is not responsible for any errors or omissions in this document.

1	
2	
3	
4	
5	
6	
7	
8	
9	
10	

NO. DATE ISSUE/REVISION
 CROSS REFERENCE

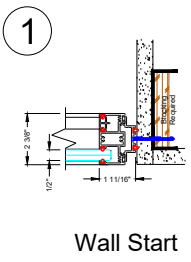
0

Quantum Offset Single Butt-Glazed Standard Panel Details

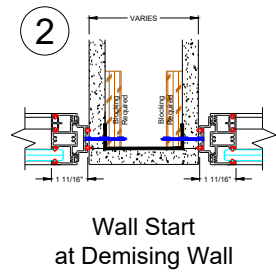
Job Specific Details to Supercede Typical Standard Details

DATE: November 2023
 SCALE: 1/4" = 1'-0"
 DRAWING REFERENCE:
 PROJECT NO:
 PROJECT LEADER:
 CADD/DRAWER:
 CHECKED BY:
 CADD FILE NAME:

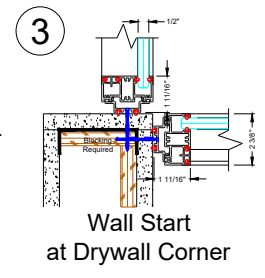
DRAWING NO. **1**
 SHEET NO.



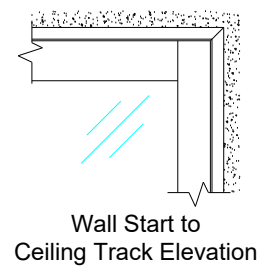
Wall Start



Wall Start at Demising Wall

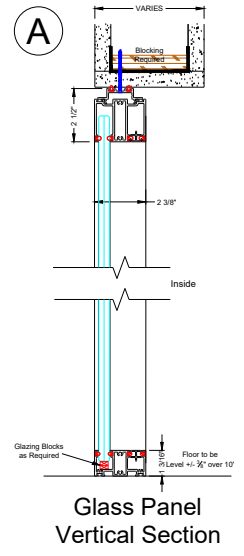


Wall Start at Drywall Corner

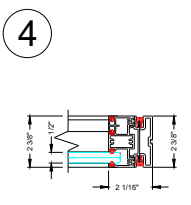


Wall Start to Ceiling Track Elevation

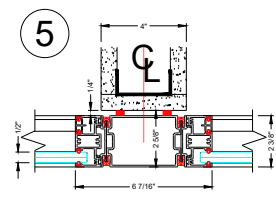
Note : System shown flush to corridor side of soffit and sheetrock wall. System can also be setback or centered if so desired. Blocking required either way.



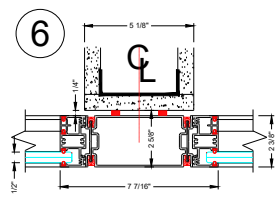
Glass Panel Vertical Section



Finished End

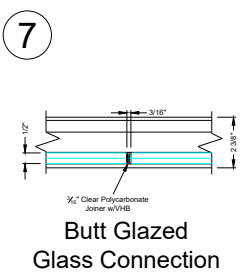


3" In-Line Post at 4" Drywall Bypass

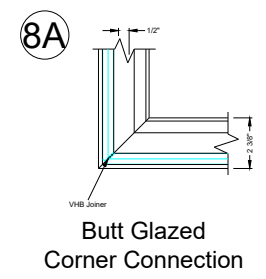


4" In-Line Post at 5 1/8" Drywall Bypass

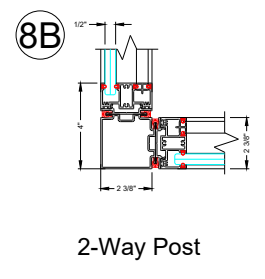
Glass shown as 1/2", can also utilize 3/8" glass within panels.



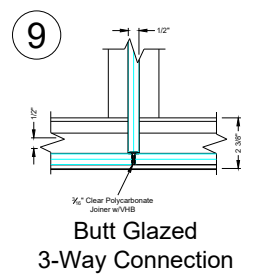
Butt Glazed Glass Connection



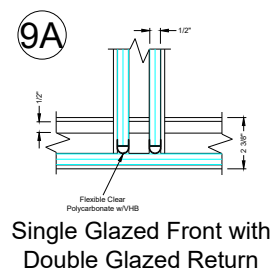
Butt Glazed Corner Connection



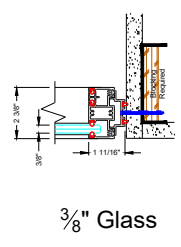
2-Way Post



Butt Glazed 3-Way Connection

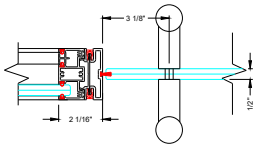


Single Glazed Front with Double Glazed Return



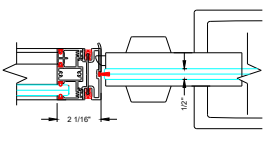
3/8" Glass

10A



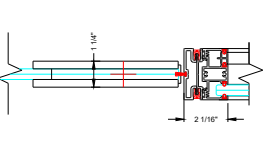
Panel to DF Keeper Glass Pivot Door

10B



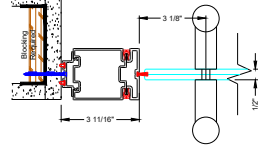
Panel to DF Keeper Glass Pivot Door

11



Panel to DF Pivot Glass Pivot Door

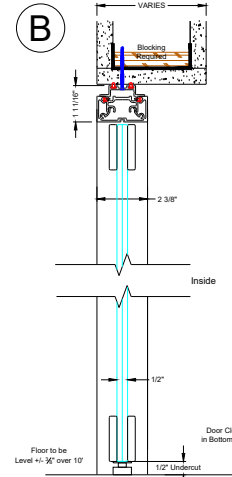
12



DF Keeper at Drywall Glass Pivot Door

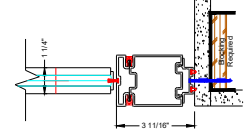
Note : System shown flush to corridor side of soffit and sheetrock wall. System can also be setback or centered if so desired. Blocking required either way.

B



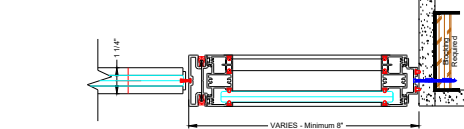
Glass Pivot Door Vertical Section

13A



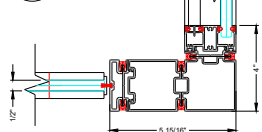
DF Pivot at Drywall Glass Pivot Door

13B



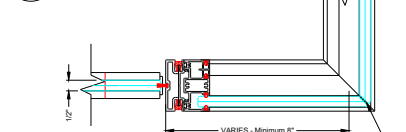
DF Pivot at Drywall with Sidelight Glass Pivot Door

14A



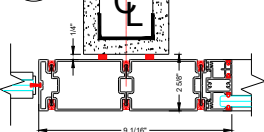
DF Pivot at 2-Way Post Glass Pivot Door

14B



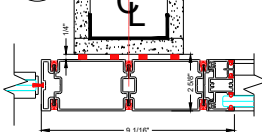
DF Pivot at Butt Glazed Corner Glass Pivot Door

15



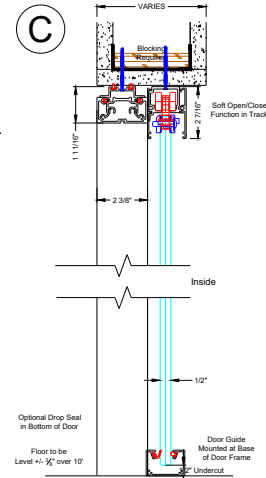
DF Pivot at 4" Bypass Glass Pivot Door

16



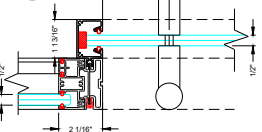
DF Pivot at 5 1/8" Bypass Glass Pivot Door

C



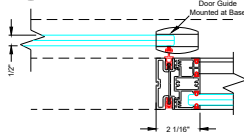
Glass Sliding Door Vertical Section

17



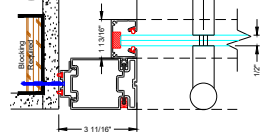
Panel to DF Receiver Glass Sliding Door

18



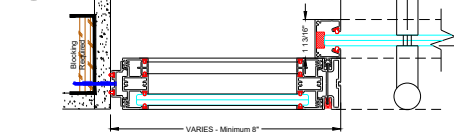
Panel to DF Seal Glass Sliding Door

19A



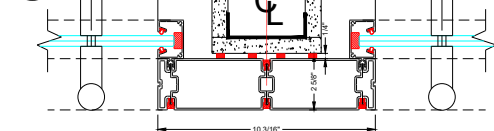
Receiver at Drywall Glass Sliding Door

19B



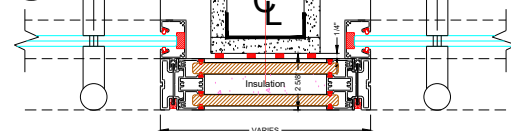
Receiver at Drywall with Sidelight Glass Sliding Door

20



Receiver at 5 1/8" Bypass Glass Sliding Door

20A



Receiver at 5 1/8" Glass Sliding Door
Optional Solid Panel in Lieu of Posts

This document is the property of Infinium. It is to be used for the project and location specified. It is not to be reproduced, stored in a retrieval system, or transmitted in any form or by any means, electronic, mechanical, photocopying, recording, or by any information storage and retrieval system, without the prior written permission of Infinium.

NO.	DATE	ISSUE/REVISION
1		
2		
3		
4		
5		
6		
7		
8		
9		
10		

CHECKED BY: _____
NO. DATE ISSUE/REVISION
CORRECTED BY: _____

0

DRAWING NO. _____
DATE: November 2023
SCALE: 8" = 1'-0"
DRAWING REVISIONS:
PROJECT NO. _____
PROJECT LEADER: _____
DESIGNER: _____
CHECKED BY: _____
DATE FILED: _____

DRAWING NO. _____
SHEET NO. **2**

This document is the property of InFinium. It is to be used for the project and location specified. It is not to be reproduced, stored in a retrieval system, or transmitted in any form or by any means, electronic, mechanical, photocopying, recording, or by any information storage and retrieval system, without the prior written permission of InFinium.

1	
2	
3	
4	
5	
6	
7	
8	
9	
10	

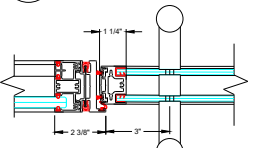
NO. DATE ISSUE/REVISION
 CROSS REFERENCE

0

DRAWING TITLE

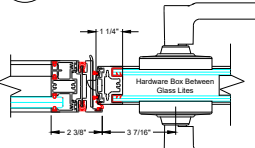
DATE:	November 2023
SCALE:	1/8" = 1'-0"
DRAWING HISTORY:	
PROJECT NO:	
PROJECT LEADER:	
DESIGNER:	
CHECKED BY:	
CAD FILE NAME:	
DRAWING NO:	
SHEET NO:	3

21A



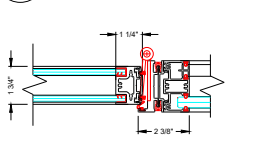
Panel to DF Keeper
 Double Glazed Hinge Dr

21B



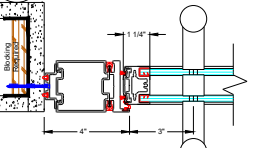
Panel to DF Keeper
 Double Glazed Hinge Dr

22



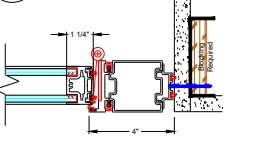
Panel to DF Hinge
 Double Glazed Hinge Dr

23



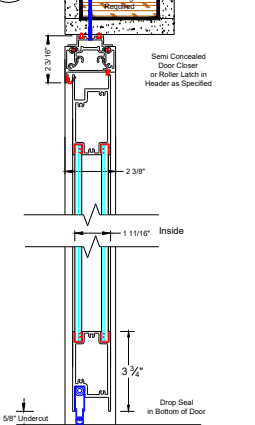
DF Keeper at Drywall
 Double Glazed Hinge Dr

24A



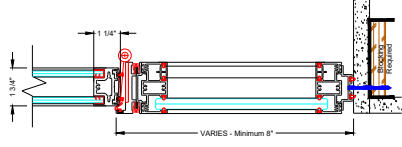
DF Hinge at Drywall
 Double Glazed Hinge Dr

D



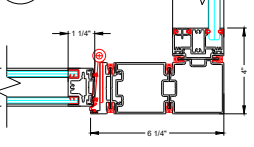
Double Glazed Hinge Dr
 Vertical Section

24B



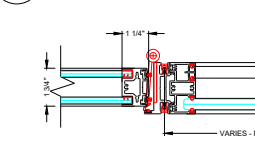
DF Hinge at Drywall with Sidelight
 Double Glazed Hinge Dr

25A



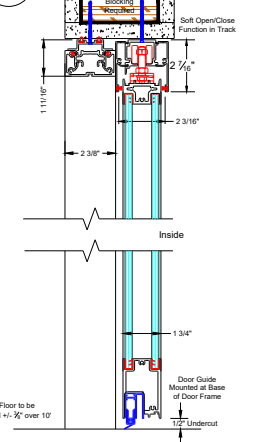
DF Hinge at 2-Way Post
 Double Glazed Hinge Dr

25B



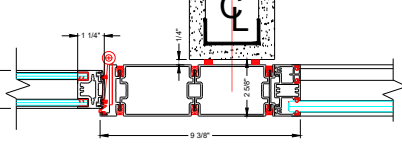
DF Hinge at Butt Glazed Corner
 Double Glazed Hinge Dr

E



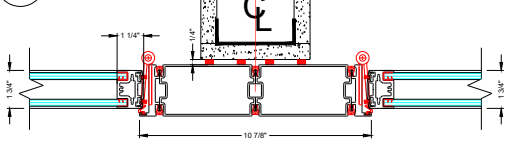
Double Glazed Slider
 Vertical Section

26



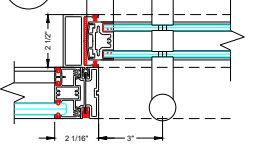
DF Hinge at 4" Bypass
 Double Glazed Hinge Door

27



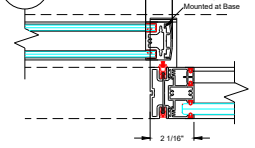
DF Hinge at 5/8" Bypass Glass
 Back to Back Double Glazed Hinge Doors

28



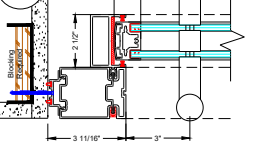
Panel to DF Receiver
 Double Glazed Slider

29



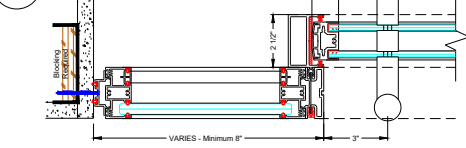
Panel to DF Seal
 Double Glazed Slider

30A



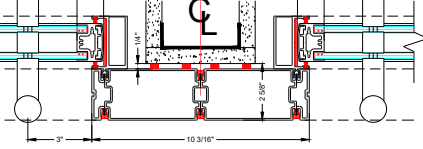
Receiver at Drywall
 Double Glazed Slider

30B

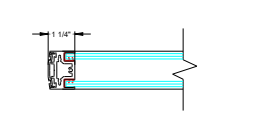


Receiver at Drywall with Sidelight
 Double Glazed Slider

31

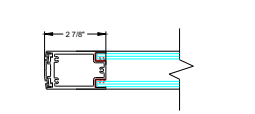


DF Receiver at 5/8" Bypass Glass
 Back to Back Double Glazed Sliders



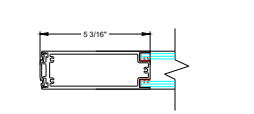
- Door Stile for use with Swing or Sliding Doors
- 1" Door Stiles Can be Used as Top and Bottom Rails on Sliding Doors
- Pulls can be Utilized Through Glass
- 1" Stile on Swing Doors with Pulls, Requires Semi-Concealed Closer in 3-3/4" Top Rail
- Lever Sets can be Utilized with a Hardware Box on Swing Doors
- Can be Used as Top and Bottom Rails without Closers or Drop Seals

1" Door Stile or Rail



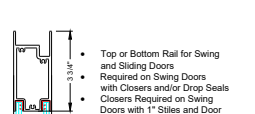
- Door Stile for use with Swing or Sliding Doors
- Pulls can be Utilized Through Glass
- Lever Sets in Aluminum on Swing Doors
- Can be Used as Top and Bottom Rails without Closers or Drop Seals

3" Door Stile or Rail



- Door Stile for use with Swing or Sliding Doors
- Pulls can be Utilized Through Aluminum
- Lever Sets in Aluminum on Swing Doors
- Can be Used as Top and Bottom Rails without Closers or Drop Seals

5" Door Stile or Rail



- Top or Bottom Rail for Swing and Sliding Doors
- Required on Swing Doors with Closers and/or Drop Seals
- Closers Required on Swing Doors with 1" Stiles and Door Pull

3 3/4" Door Rail

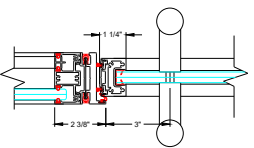
1	
2	
3	
4	
5	
6	
7	
8	
9	
10	

NO. DATE ISSUE/REVISION
 CROSS REFERENCE

0

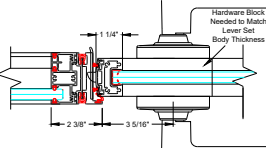
DATE:	November 2023
SCALE:	6" = 1'-0"
DRAWING HISTORY:	
PROJECT NO.:	
PROJECT LEADER:	
CHARACTER:	
CHECKED BY:	
CAD FILE NAME:	
DRAWING NO.:	
SHEET NO.:	4

32A



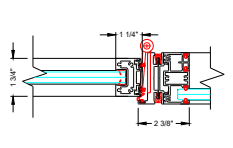
Panel to DF Keeper
 Single Glazed Hinge Dr

32B



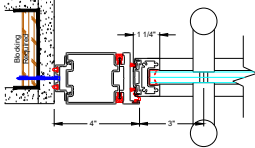
Panel to DF Keeper
 Single Glazed Hinge Dr

33



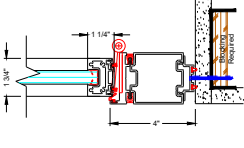
Panel to DF Hinge
 Single Glazed Hinge Dr

34



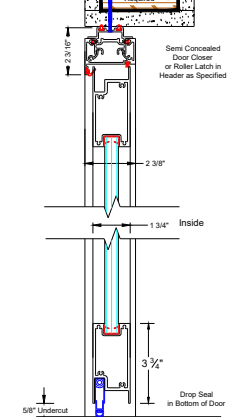
DF Keeper at Drywall
 Single Glazed Hinge Dr

35A



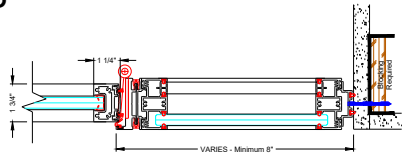
DF Hinge at Drywall
 Single Glazed Hinge Dr

F



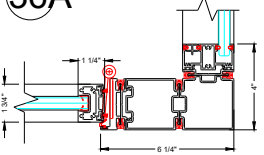
Single Glazed Hinge Dr
 Vertical Section

35B



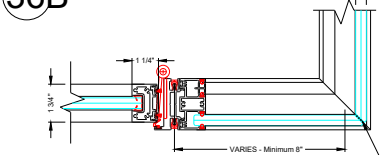
DF Hinge at Drywall with Sidelight
 Single Glazed Hinge Dr

36A



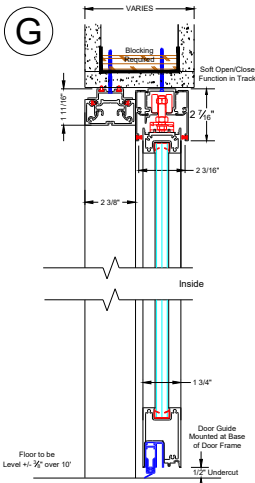
DF Hinge at 2-Way Post
 Single Glazed Hinge Dr

36B



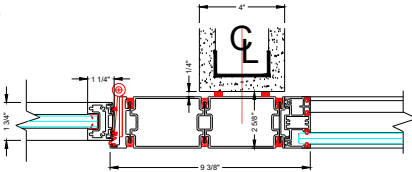
DF Pivot at Butt Glazed Corner
 Single Glazed Hinge Dr

G



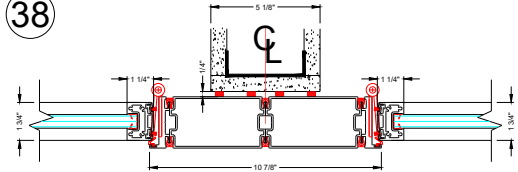
Single Glazed Slider
 Vertical Section

37



DF Hinge at 4" Bypass
 Single Glazed Hinge Door

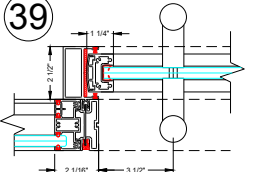
38



DF Hinge at 5 1/8" Bypass Glass
 Back to Back Single Glazed Hinge Doors

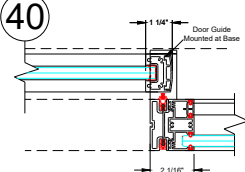
Glass shown as 1/2", can
 also utilize 3/8" tempered
 glass within doors.

39



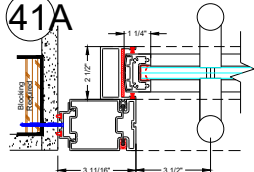
Panel to DF Receiver
 Single Glazed Slider

40



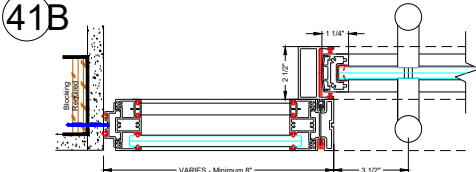
Panel to DF Seal
 Single Glazed Slider

41A



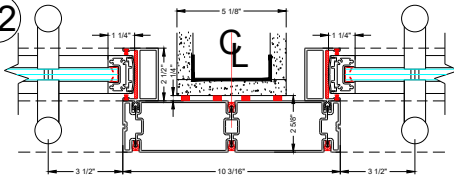
Receiver at Drywall
 Single Glazed Slider

41B

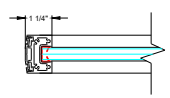


Receiver at Drywall with Sidelight
 Single Glazed Slider

42

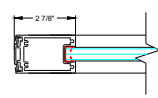


DF Receiver at 5 1/8" Bypass Glass
 Back to Back Single Glazed Sliders



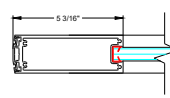
- Door Stile for use with Swing or Sliding Doors
- 1" Door Stiles Can be Used as Top and Bottom Rails on Sliding Doors
- Pulls can be Utilized Through Glass
- Lever Sets in Aluminum on Swing Doors
- Can be Used as Top and Bottom Rails without Closers or Drop Seals
- Lever Sets can be Utilized with a Hardware Box on Swing Doors
- Can be Used as Top and Bottom Rails without Closers or Drop Seals

1" Door Stile or Rail



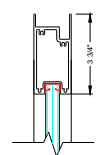
- Door Stile for use with Swing or Sliding Doors
- Pulls can be Utilized Through Glass
- Lever Sets in Aluminum on Swing Doors
- Can be Used as Top and Bottom Rails without Closers or Drop Seals

3" Door Stile or Rail



- Door Stile for use with Swing or Sliding Doors
- Pulls can be Utilized Through Aluminum
- Lever Sets in Aluminum on Swing Doors
- Can be Used as Top and Bottom Rails with Closers or Drop Seals

5" Door Stile or Rail



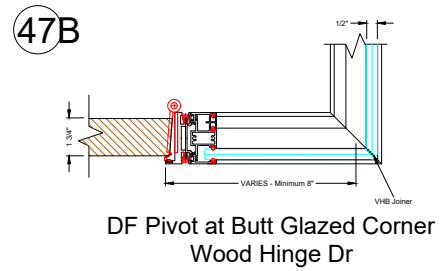
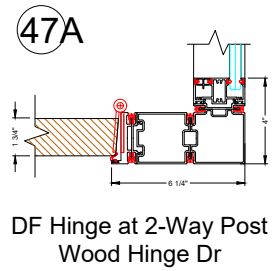
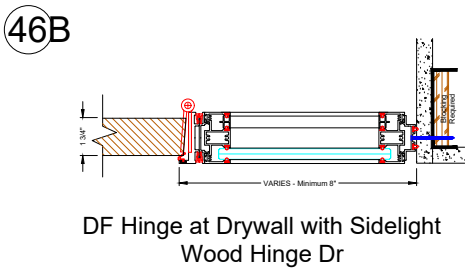
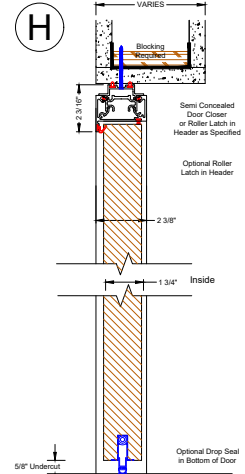
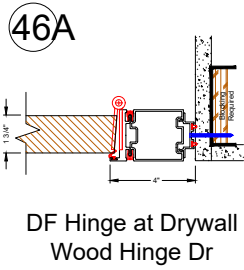
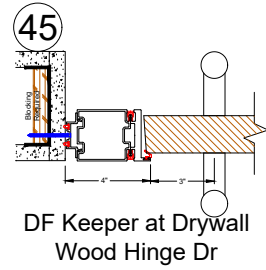
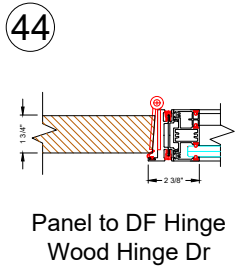
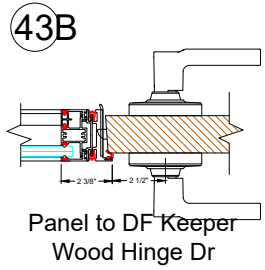
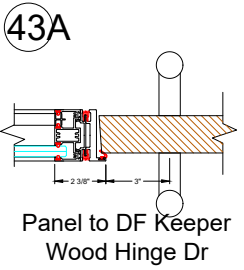
- Top or Bottom Rail for Swing and Sliding Doors
- Required on Swing Doors with Closers and/or Drop Seals
- Closers Required on Swing Doors with 1" Stiles and Door Pull

3 3/4" Door Rail

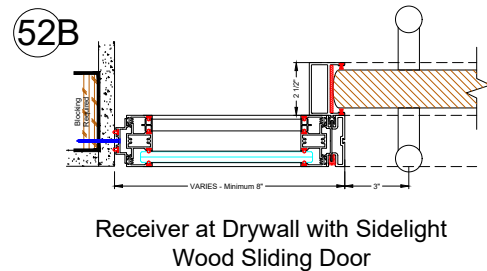
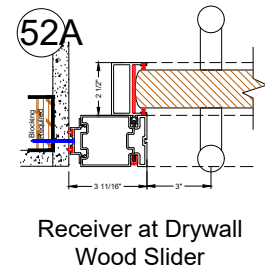
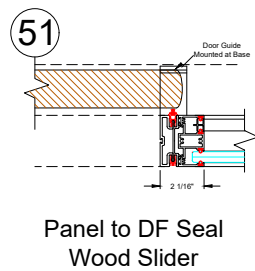
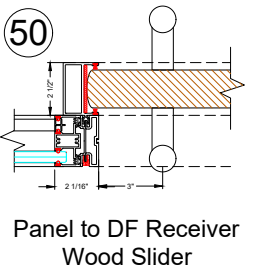
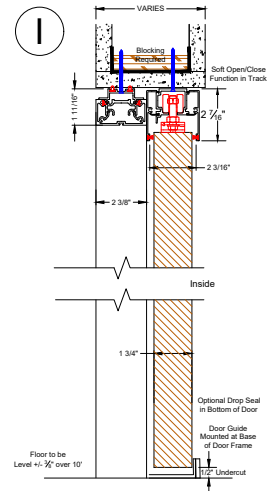
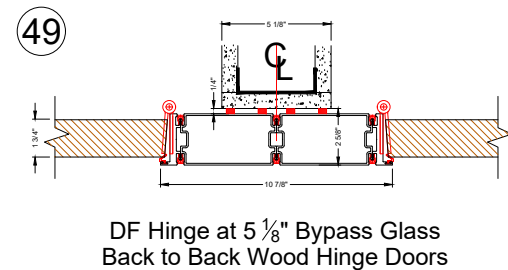
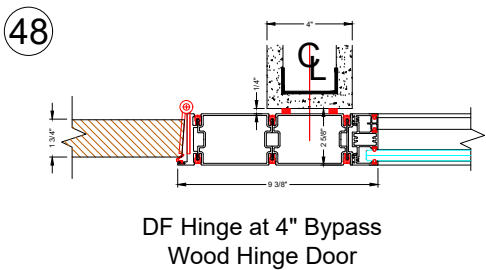
The document is the property of Infinium. It is to be used only for the project and location specified. It is not to be reproduced, stored in a retrieval system, or transmitted in any form or by any means, electronic, mechanical, photocopying, recording, or by any information storage and retrieval system, without the prior written permission of Infinium.

NO.	DATE	ISSUE/REVISION
1		
2		
3		
4		
5		
6		
7		
8		
9		
10		

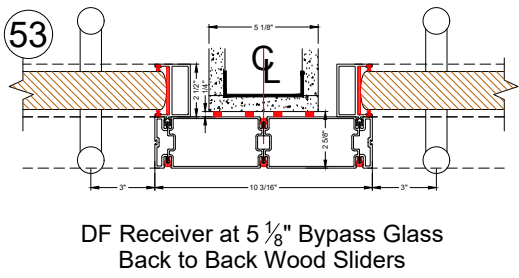
CHECKED BY: _____
 0



Wood Hinge Dr Vertical Section



Wood Slider Vertical Section



DF Receiver at 5 1/8" Bypass Glass Back to Back Wood Sliders

This document is the property and copyright of Infinium. It is intended for general information only and is not intended for use in any specific project without the express written consent of Infinium. Infringement of this document is strictly prohibited.

NO. DATE ISSUE/REVISION

1			
2			
3			
4			
5			
6			
7			
8			
9			
10			

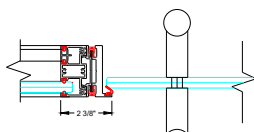
0

DATE: November 2023
 SCALE: 1/4" = 1'-0"
 DRAWING REFERENCE:
 PROJECT NO:
 PROJECT LEADER:
 CAD DRAFTER:
 CHECKED BY:
 CAD FILE NAME:

DRAWING NO:
 SHEET NO:

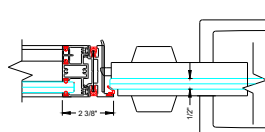
6

54A



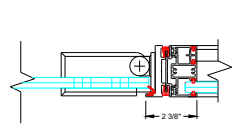
Panel to DF Keeper Glass Hinge Door

54B



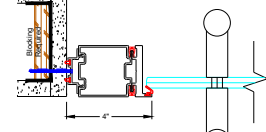
Panel to DF Keeper Glass Hinge Door

55



Panel to DF Pivot Glass Hinge Door

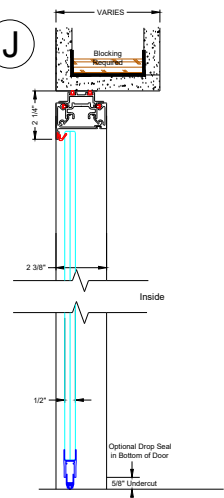
56



DF Keeper at Drywall Glass Hinge Door

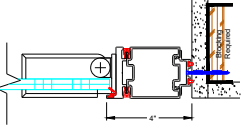
Note : System shown flush to soffit and sheetrock wall. System can also be setback or centered if so desired. Blocking required either way.

J



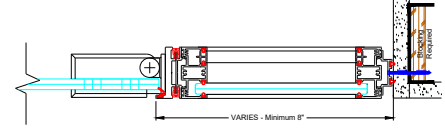
Glass Hinged Dr Vertical Section

57A



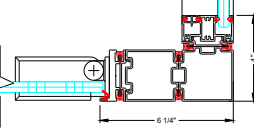
DF Hinge at Drywall Glass Hinge Door

57B



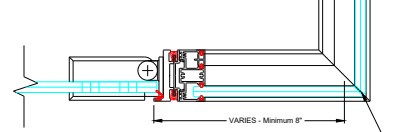
DF Hinge at Drywall with Sidelight Glass Hinge Door

58A



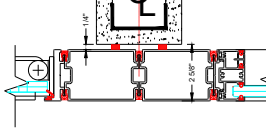
DF Hinge at 2-Way Post Glass Hinge Door

58B



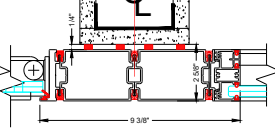
DF Hinge at Butt Glazed Corner Glass Hinge Door

59



DF Hinge at 4" Bypass Glass Hinge Door

60



DF Hinge at 5 1/8" Bypass Glass Hinge Door