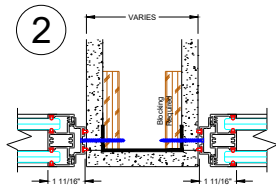
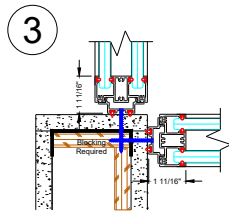


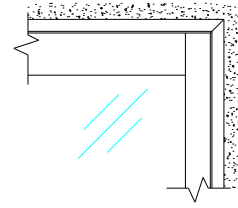
Wall Start



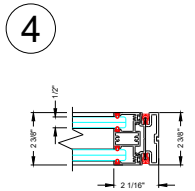
Wall Start at Demising Wall



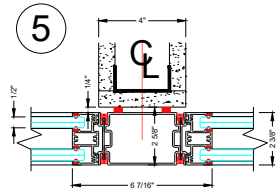
Wall Start at Drywall Corner



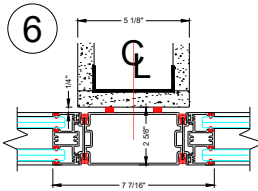
Wall Start to Ceiling Track Elevation



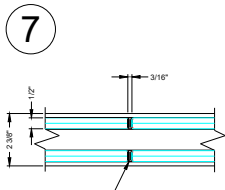
Finished End



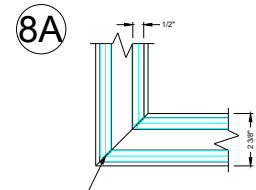
3" In-Line Post at 4" Drywall Bypass



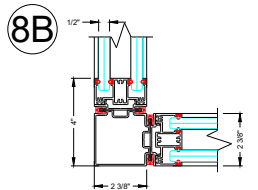
4" In-Line Post at 5 1/8" Drywall Bypass



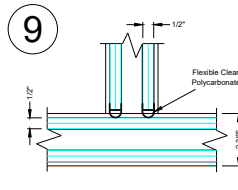
Butt Glazed Glass Connection



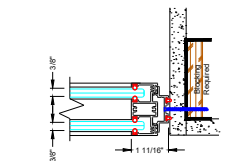
Butt Glazed Corner Connection



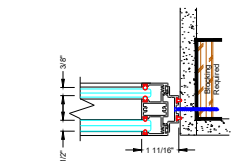
2-Way Post



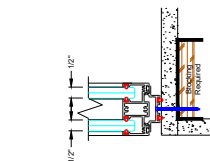
Butt Glazed 3-Way Connection



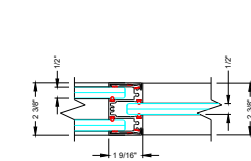
Both Lites 3/8" Glass



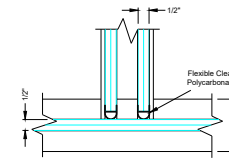
One Lite 3/8" Glass
One Lite 1/2" Glass



Both Lites 1/2" Glass



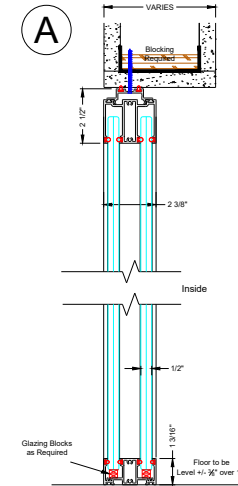
Double Glazed to Single Glazed Connection



Single Glazed Front with Double Glazed Return

Note : System shown flush to corridor side of soffit and sheetrock wall. System can also be setback or centered if so desired. Blocking required either way.

Glass shown as 1/2", can also utilize 3/8" glass within panels.



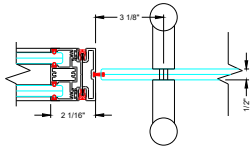
Glass Panel Vertical Section

1			
2			
3			
4			
5			
6			
7			
8			
9			
10			
11			
12			
13			
14			
15			

NO. DATE	ISSUE/REVISION
0	

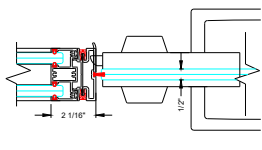
DRAWING NO.	
DATE	November 2023
SCALE	6" = 1'-0"
DRAWING REFERENCE	
PROJECT NO.	
PROJECT LEADER	
CAD DRAFTER	
CHECKED BY	
CAD FILE NAME	

10A



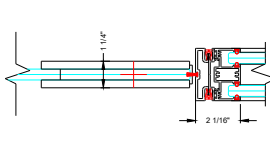
Panel to DF Keeper Glass Pivot Door

10B



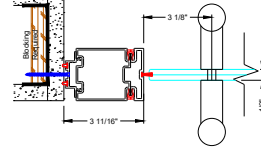
Panel to DF Keeper Glass Pivot Door

11



Panel to DF Pivot Glass Pivot Door

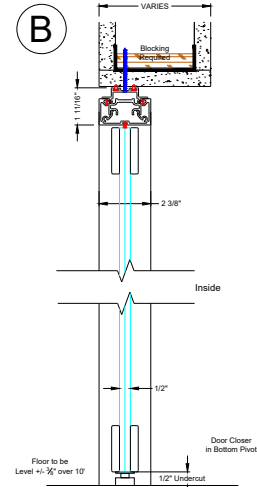
12



DF Keeper at Drywall Glass Pivot Door

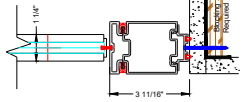
Note : System shown flush to corridor side of soffit and sheetrock wall. System can also be setback or centered if so desired. Blocking required either way.

B



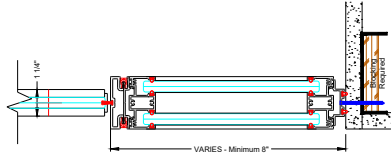
Glass Pivot Door Vertical Section

13A



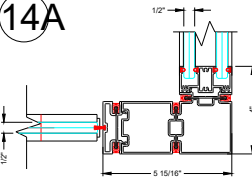
DF Pivot at Drywall Glass Pivot Door

13B



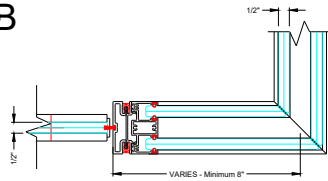
DF Pivot at Drywall with Sidelight Glass Pivot Door

14A



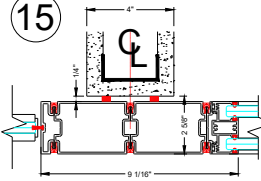
DF Pivot at 2-Way Post Glass Pivot Door

14B



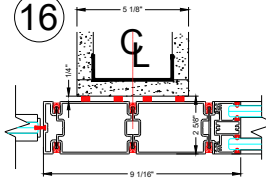
DF Pivot at Butt Glazed Corner Glass Pivot Door

15



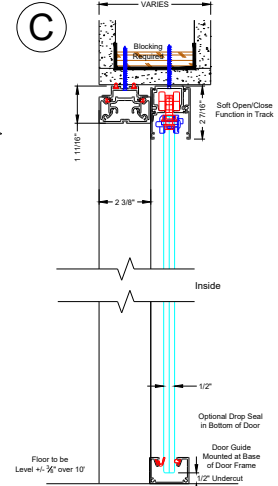
DF Pivot at 4" Bypass Glass Pivot Door

16



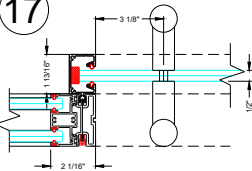
DF Pivot at 5 1/8" Bypass Glass Pivot Door

C



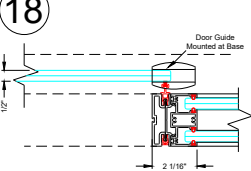
Glass Sliding Door Vertical Section

17



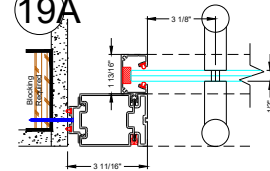
Panel to DF Receiver Glass Sliding Door

18



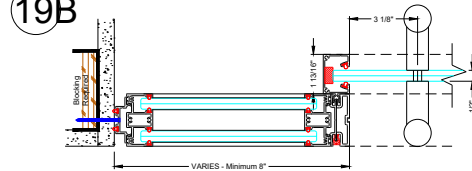
Panel to DF Seal Glass Sliding Door

19A



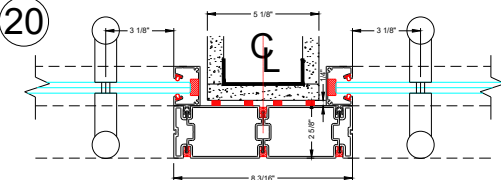
Receiver at Drywall Glass Sliding Door

19B



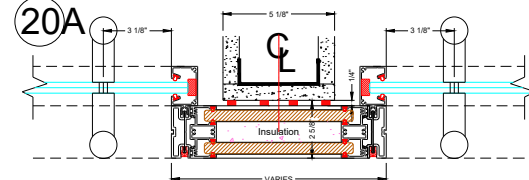
Receiver at Drywall with Sidelight Glass Sliding Door

20



Receiver at 5 1/8" Bypass Glass Sliding Door

20A



Receiver at 5 1/8" Bypass Glass Sliding Door

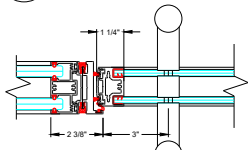
NO. DATE ISSUE/REVISION

1		
2		
3		
4		
5		
6		
7		
8		
9		
10		

0

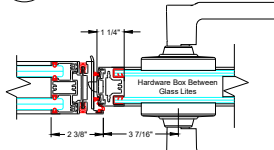
2

21A



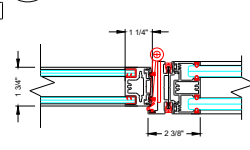
Panel to DF Keeper
Double Glazed Hinge Dr

21B



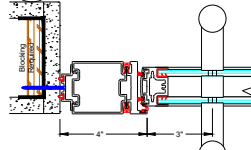
Panel to DF Keeper
Double Glazed Hinge Dr

22



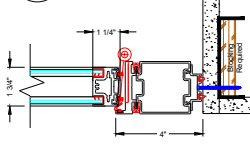
Panel to DF Hinge
Double Glazed Hinge Dr

23



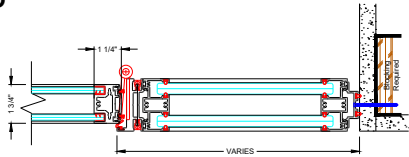
DF Keeper at Drywall
Double Glazed Hinge Dr

24A



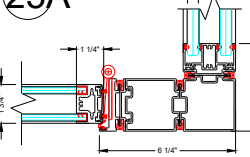
DF Hinge at Drywall
Double Glazed Hinge Dr

24B



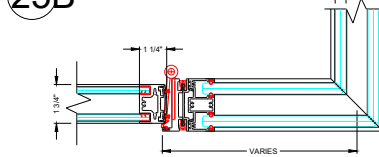
DF Hinge at Drywall with Sidelight
Double Glazed Hinge Dr

25A



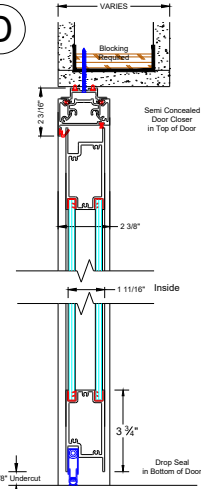
DF Hinge at 2-Way Post
Double Glazed Hinge Dr

25B



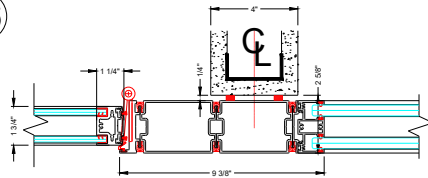
DF Pivot at Butt Glazed Corner
Double Glazed Hinge Dr

D



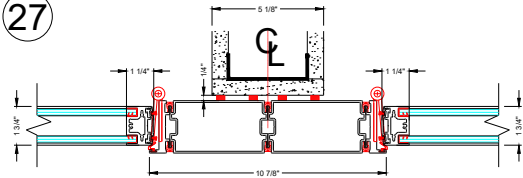
Double Glazed Hinge Dr
Vertical Section

26



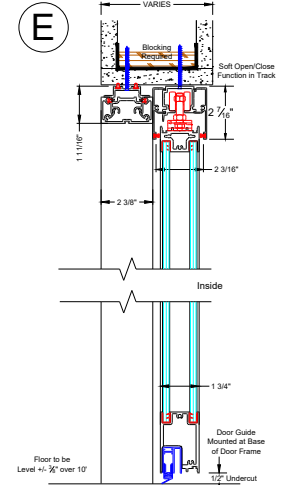
DF Hinge at 4" Bypass
Double Glazed Hinge Door

27



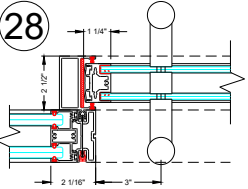
DF Hinge at 5/8" Bypass Glass
Back to Back Double Glazed Hinge Doors

E



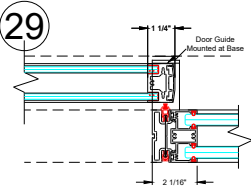
Double Glazed Slider
Vertical Section

28



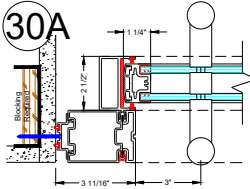
Panel to DF Receiver
Double Glazed Slider

29



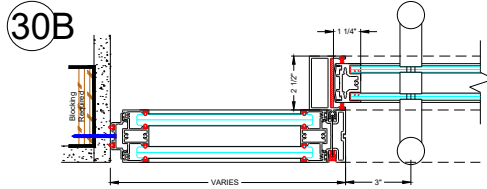
Panel to DF Seal
Double Glazed Slider

30A



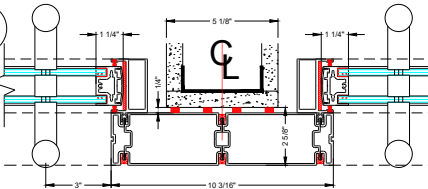
Receiver at Drywall
Double Glazed Slider

30B

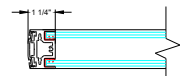


Receiver at Drywall with Sidelight
Double Glazed Slider

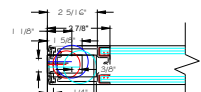
31



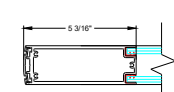
DF Receiver at 5/8" Bypass Glass
Back to Back Double Glazed Sliders



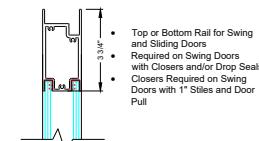
1" Door Stile or Rail



3" Door Stile or Rail



5" Door Stile or Rail



3 3/4" Door Rail

- Door Stile for use with Swing or Sliding Doors
- 1" Door Styles Can be Used as Top and Bottom Rails on Sliding Doors
- Pulls can be Utilized Through Glass
- 1" Stile on Swing Doors with Pulls, Requires Semi-Concealed Closer in 3-3/4" Top Rail
- Lever Sets can be Utilized with a Hardware Box on Swing Doors
- Can be Used as Top and Bottom Rails without Closers or Drop Seals

- Door Stile for use with Swing or Sliding Doors
- Pulls can be Utilized Through Glass
- Lever Sets in Aluminum on Swing Doors
- Can be Used as Top and Bottom Rails without Closers or Drop Seals

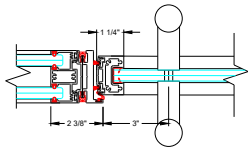
- Door Stile for use with Swing or Sliding Doors
- Pulls can be Utilized Through Aluminum
- Lever Sets in Aluminum on Swing Doors
- Can be Used as Top and Bottom Rails without Closers or Drop Seals

- Top or Bottom Rail for Swing and Sliding Doors
- Required on Swing Doors with Closers and/or Drop Seals
- Closers Required on Swing Doors with 1" Stiles and Door Pull

1		
2		
3		
4		
5		
6		
7		
8		
9		
10		
11		
12		
13		
14		
15		
16		
17		
18		
19		
20		
21		
22		
23		
24		
25		
26		
27		
28		
29		
30		
31		
32		
33		
34		
35		
36		
37		
38		
39		
40		
41		
42		
43		
44		
45		
46		
47		
48		
49		
50		

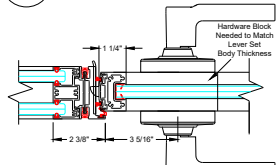
NO. DATE: ISSUE-REVISION
CURRENT REVISION: 0

32A



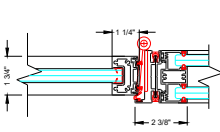
Panel to DF Keeper
Single Glazed Hinge Dr

32B



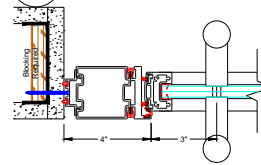
Panel to DF Keeper
Single Glazed Hinge Dr

33



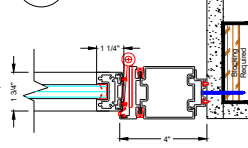
Panel to DF Hinge
Single Glazed Hinge Dr

34



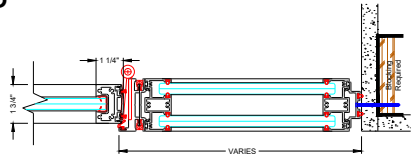
DF Keeper at Drywall
Single Glazed Hinge Dr

35A



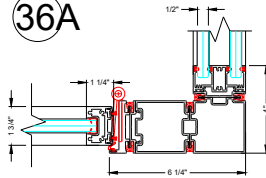
DF Hinge at Drywall
Single Glazed Hinge Dr

35B



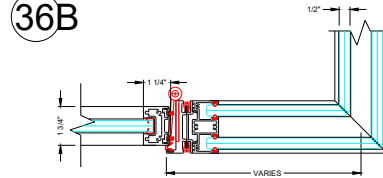
DF Hinge at Drywall with Sidelight
Single Glazed Hinge Dr

36A



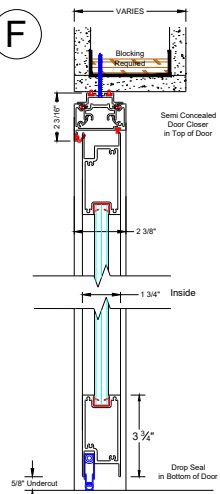
DF Hinge at 2-Way Post
Single Glazed Hinge Dr

36B



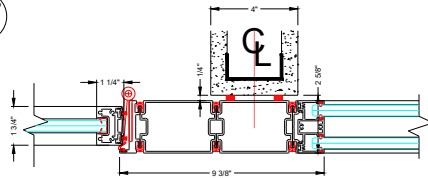
DF Pivot at Butt Glazed Corner
Single Glazed Hinge Dr

F



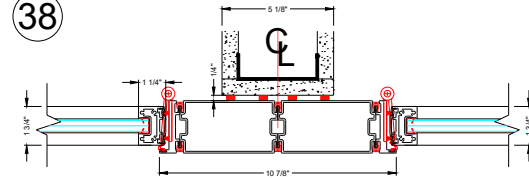
Single Glazed Hinge Dr
Vertical Section

37



DF Hinge at 4" Bypass
Single Glazed Hinge Door

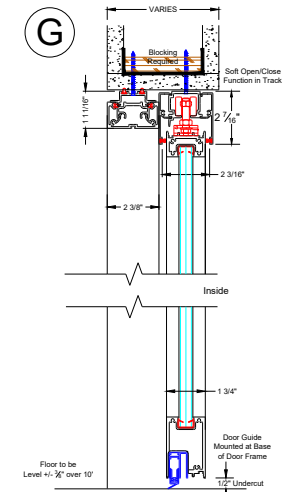
38



DF Hinge at 5 1/8" Bypass Glass
Back to Back Single Glazed Hinge Doors

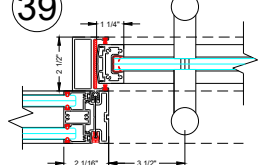
Glass shown as 1/2", can also utilize 3/8" tempered glass within doors.

G



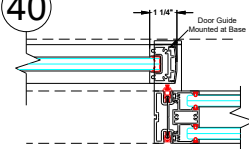
Single Glazed Slider
Vertical Section

39



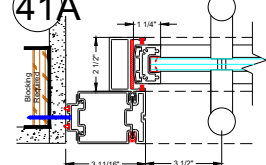
Panel to DF Receiver
Single Glazed Slider

40



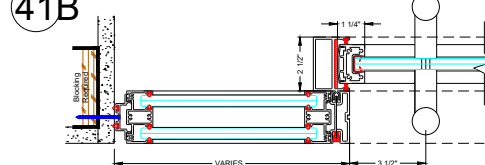
Panel to DF Seal
Single Glazed Slider

41A



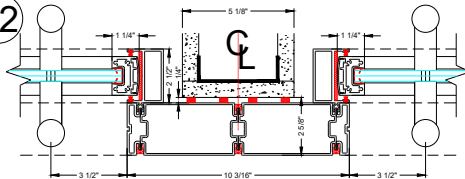
Receiver at Drywall
Single Glazed Slider

41B

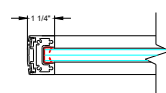


Receiver at Drywall with Sidelight
Single Glazed Slider

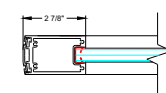
42



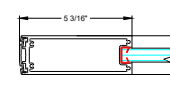
DF Receiver at 5 1/8" Bypass Glass
Back to Back Single Glazed Sliders



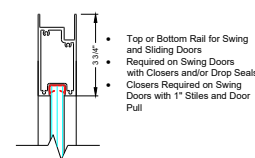
1" Door Stile or Rail



3" Door Stile or Rail



5" Door Stile or Rail



3 3/4" Door Rail

- Door Stile for use with Swing or Sliding Doors
- 1" Door Stiles Can be Used as Top and Bottom Rails on Sliding Doors
- Pulls can be Utilized Through Glass
- 1" Stile on Swing Doors with Pulls, Requires Semi-Concealed Closer in 3-3/4" Top Rail
- Lever Sets can be Utilized with a Hardware Box on Swing Doors
- Can be Used as Top and Bottom Rails without Closers or Drop Seals

- Door Stile for use with Swing or Sliding Doors
- Pulls can be Utilized Through Glass
- Lever Sets in Aluminum on Swing Doors
- Can be Used as Top and Bottom Rails without Closers or Drop Seals

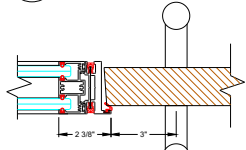
- Door Stile for use with Swing or Sliding Doors
- Pulls can be Utilized Through Aluminum
- Lever Sets in Aluminum on Swing Doors
- Can be Used as Top and Bottom Rails with Closers or Drop Seals

- Top or Bottom Rail for Swing and Sliding Doors
- Required on Swing Doors with Closers and/or Drop Seals
- Closers Required on Swing Doors with 1" Stiles and Door Pull

1	
2	
3	
4	
5	
6	
7	
8	
9	
10	

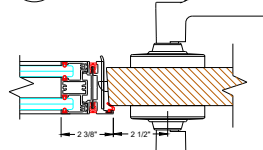
CURRENT REVISION: 0

43A



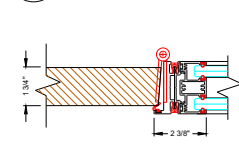
Panel to DF Keeper
Wood Hinge Dr

43B



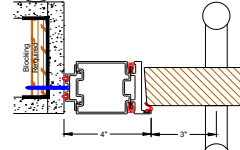
Panel to DF Keeper
Wood Hinge Dr

44



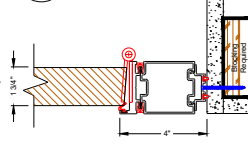
Panel to DF Hinge
Wood Hinge Dr

45



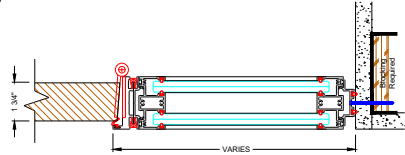
DF Keeper at Drywall
Wood Hinge Dr

46A



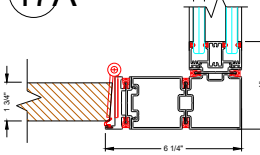
DF Hinge at Drywall
Wood Hinge Dr

46B



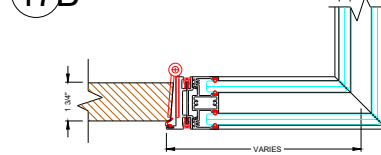
DF Hinge at Drywall with Sidelight
Wood Hinge Dr

47A



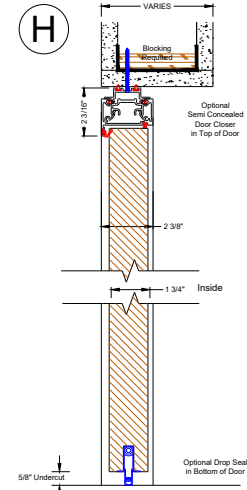
DF Hinge at 2-Way Post
Wood Hinge Dr

47B



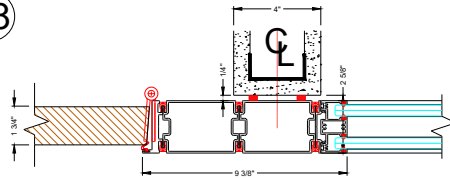
DF Pivot at Butt Glazed Corner
Wood Hinge Dr

H



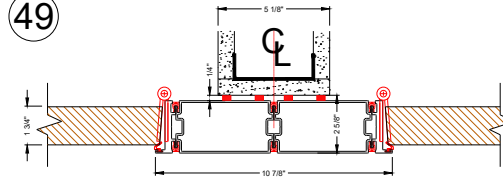
Wood Hinge Dr
Vertical Section

48



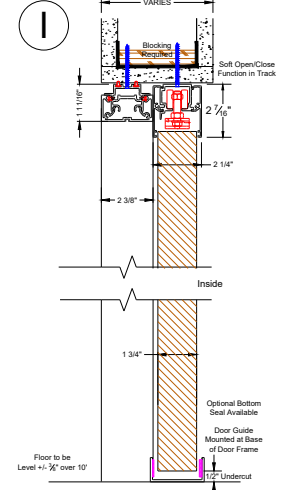
DF Hinge at 4" Bypass
Wood Hinge Door

49



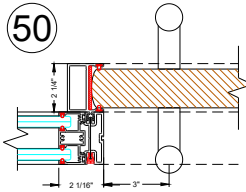
DF Hinge at 5 1/8" Bypass Glass
Back to Back Wood Hinge Doors

I



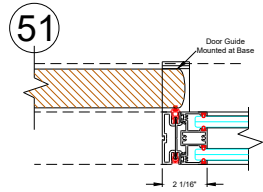
Wood Slider
Vertical Section

50



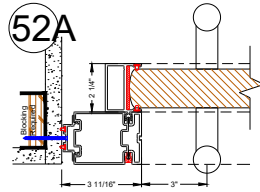
Panel to DF Receiver
Wood Slider

51



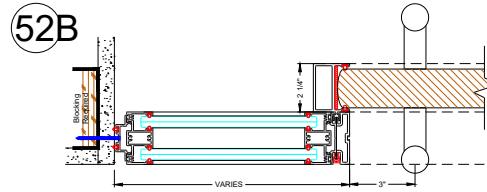
Panel to DF Seal
Wood Slider

52A



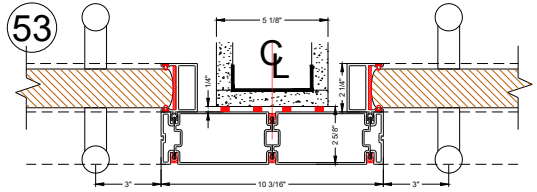
Receiver at Drywall
Wood Slider

52B



Receiver at Drywall with Sidelight
Wood Sliding Door

53



DF Receiver at 5 1/8" Bypass Glass
Back to Back Wood Sliders

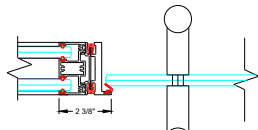
Not to be used for spans or weights not shown. Refer to the manufacturer's literature for details. See also the applicable code requirements for glass and glazing. The drawings are not to scale. Dimensions and quantities are subject to change without notice. All dimensions are in inches unless otherwise noted.

1	
2	
3	
4	
5	
6	
7	
8	
9	
10	
11	
12	
13	
14	
15	
16	
17	
18	
19	
20	

NO. DATE ISSUE/REVISION

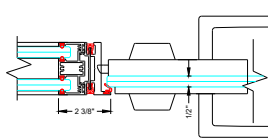
CURRENT REVISION: 0

54A



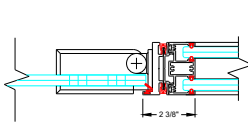
Panel to DF Keeper Glass Hinge Door

54B



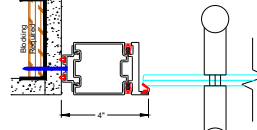
Panel to DF Keeper Glass Hinge Door

55



Panel to DF Pivot Glass Hinge Door

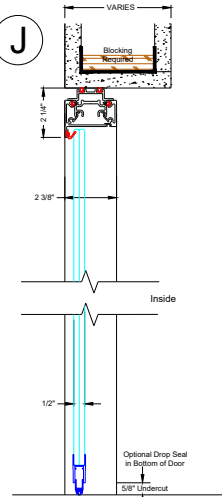
56



DF Keeper at Drywall Glass Hinge Door

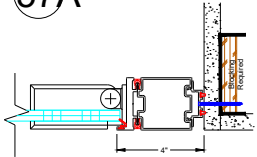
Note : System shown flush to corridor side of soffit and sheetrock wall. System can also be setback or centered if so desired. Blocking required either way.

J



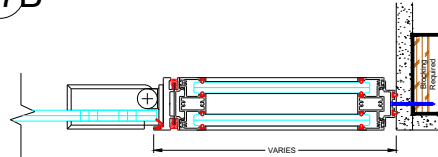
Glass Hinged Dr Vertical Section

57A



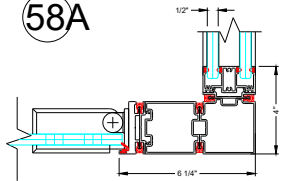
DF Hinge at Drywall Glass Hinge Door

57B



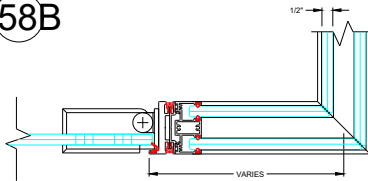
DF Hinge at Drywall with Sidelight Glass Hinge Door

58A



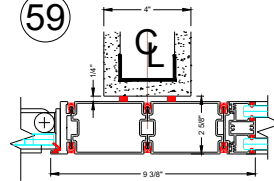
DF Hinge at 2-Way Post Glass Hinge Door

58B



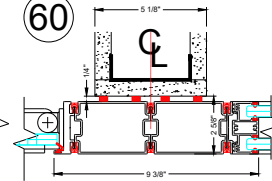
DF Hinge at Butt Glazed Corner Glass Hinge Door

59



DF Hinge at 4" Bypass Glass Hinge Door

60



DF Hinge at 5 1/8" Bypass Glass Hinge Door

Not Designed for pressure and weight of vehicle
Professional Product Systems, Inc. is not liable for any structural
failure that may occur as a result of misuse of the product.
The drawings are not to be used for any other purpose
without the written consent of Professional Product Systems, Inc.

NO.	DATE	ISSUE/REVISION
1		
2		
3		
4		
5		
6		
7		
8		
9		
10		

CURRENT REVISION: 0

DRAWING NO.
DATE: May 2023
SCALE: 1/4" = 1'-0"
DRAWING REFERENCE:
PROJECT NO.
PROJECT LEADER
CAD DRAFTER
CHECKED BY:
CAD FILE NAME